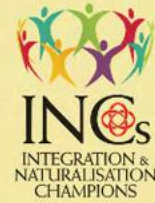




People's Association



INC  
s  
INTEGRATION &  
NATURALISATION  
CHAMPIONS



# YOUR Neighbourly WELCOME GUIDE

LET'S EXPLORE  
**Holland-Bukit Timah GRC**  
**Bukit Panjang SMC**



Singapore Together is about the Government working with Singaporeans, and Singaporeans working with one another, to build our future Singapore. The Government will open up more partnership opportunities for Singaporeans to participate. The Government also hopes to support more citizen-led efforts. Whatever our background or interests, we can each step forward to contribute in areas that we care about. By working together, we can turn diversity into strength and transform challenges into opportunities, to build a Singapore that present and future generations of Singaporeans will be proud of.



No part of this guidebook may be reproduced without the written permission of People's Association. All rights reserved.

Photo Disclaimer:  
Several photographs in this book were taken during the pre-COVID-19 period.

Copyright © 2021 by People's Association.  
All information is correct at time of publication (November 2021).

# Singapore, Our Home!

Singapore is a multi-racial society that celebrates the diversity and vibrancy of different cultures, ethnicities and religions. What better way to discover the gastronomical cuisines, heritage and architectural landmarks and recreational activities than to start with a leisurely stroll around your neighbourhood. An initiative of the People's Association, "Your Neighbourly Welcome Guide" contains colourful anecdotes and well-kept secrets from residents and volunteers. These unique stories of places, activities and experiences are happening right in your neighbourhood.

Discover Holland-Bukit Timah GRC, Bukit Panjang SMC and other neighbourhoods through the e-guides here:  
[www.pa.gov.sg/our-programmes/community-integration](http://www.pa.gov.sg/our-programmes/community-integration)



# Welcome to Our Neighbourhood!

## Po7 Food Hunt

- A humble food centre just a short walk from the Singapore Botanic Gardens
- Hawker centres with well-known stalls
- Other affordable mouthwatering local delights and more!

## Po9 Tracing Our Roots

- Get to know the mosque with a delicious past
- Enjoy a nature park that used to be a dairy farm
- Visit culturally rich religious sites and more!

## Pi3 Fun In The Sun

- Get up close with animals at the Singapore Zoo
- Discover biodiversity along the Rail Corridor
- Go on a hiking trail and more!

## Pi7 Connect With Community Spaces

- Enjoy arts and culture at the Bangkit Art Street
- Get together with friends and family and marvel at the sight of the Pang Sua Pond!

## Pi9 Be A Part Of The Community

- The monthly recycling programme, ezi Cash-For-Trash
- Make a difference at a blood donation drive
- Join volunteers in Plogging and more!

## P2I People Of The Neighbourhood

- Smile and say hello to these people from different walks of life around your neighbourhood!



# MORE ABOUT SINGAPORE



## FOOD PARADISE

Ask almost anyone, and they will tell you eating is one of our favourite things to do! Our multicultural identity has opened us to the wide variety of cuisines and culinary trends. A definite treat for your taste buds, experience the richness of our different spices, coconut and pandan as you chew into our flavourful local delights which you can find around the corner.



## FESTIVALS & CULTURES

As a vibrant cityscape with many cultures, Singapore has many festivals and events for everyone to join. People from all different racial and cultural backgrounds can enjoy exciting festivals like the Chingay festival, Thaipusam, Deepavali, Hari Raya Puasa and Mid-Autumn festival.

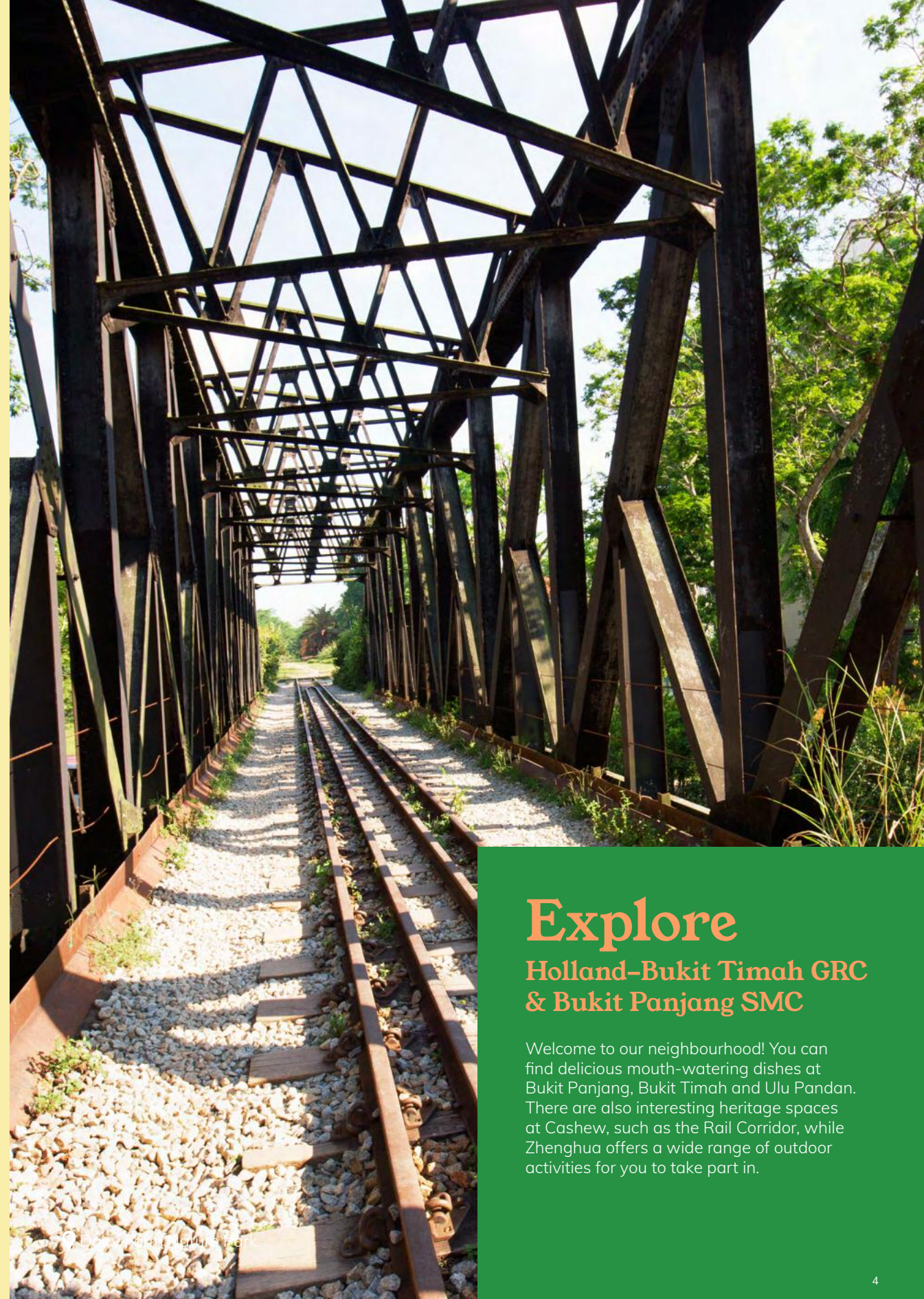


## THE OLD & THE NEW

Old shophouses amidst shiny new skyscrapers. In Singapore, one way we keep our history alive is through active conservation. A lot of the old houses, shophouses and places of significance have been preserved to remind us of our roots. Some of these places are where early immigrants lived or worked. While exploring our neighbourhoods, you will find charming old-school places woven into our cosmopolitan lifestyle and given new lives as eateries, shops, or other indulgences.

Experience a slice of Singapore right in your neighbourhood! Discover an eclectic mix of food, heritage, shopping, culture and more right at your doorstep and mingle with people in your neighbourhood through fun-filled workshops and events.

#yourneighbourlywelcomeguide



## Explore Holland-Bukit Timah GRC & Bukit Panjang SMC

Welcome to our neighbourhood! You can find delicious mouth-watering dishes at Bukit Panjang, Bukit Timah and Ulu Pandan. There are also interesting heritage spaces at Cashew, such as the Rail Corridor, while Zhenghua offers a wide range of outdoor activities for you to take part in.

## A VERSATILE NEIGHBOURHOOD

**Holland-Bukit Timah GRC**

Made up of Bukit Timah, Cashew, Ulu Pandan and Zhenghua, the Holland-Bukit Timah neighbourhood presents an eclectic mix of heritage spaces, outdoor and community activities, as well as a diverse range of delectable cuisines.



**BUKIT PANJANG SMC**

## INTRODUCING HOLLAND-BUKIT TIMAH GRC & BUKIT PANJANG SMC

## OLD TO NEW

**Bukit Panjang SMC**

Deriving its name from the Malay word 'long hills', Bukit Panjang used to refer to low hills in the area close to Bukit Timah. Before redevelopment, Bukit Panjang consisted solely of rural settlements, industrial factories and agricultural spaces. Today, Bukit Panjang is known to have a wealth of lush greenery and has become a popular area amongst Singaporeans for outdoor activities such as trekking and dirt biking.

# FOOD HUNT



From savoury dishes to sweet snacks or desserts, a plethora of food options awaits the adventurous foodie. Explore a variety of local eats right in your neighbourhood today!

**KEEP OUR TABLES CLEAN**

In Singapore, it's mandatory for diners to return their trays and clear their tables at public dining places such as hawker centres. Let's keep our hawker centres clean again!



**1**  
**ADAM ROAD FOOD CENTRE**  
📍 2 Adam Road

Adam Road Food Centre is a relatively small hawker centre famous for its Nasi Lemak and prawn noodles. It is centrally located at the road junction of Dunearn Road and Farrer flyover, just a short walk across the road from Singapore Botanic Gardens.



**2**  
**BUKIT TIMAH MARKET & FOOD CENTRE**  
📍 51 Upper Bukit Timah Road

Fill your tummy after a hike along the Rail Corridor at Bukit Timah Food Centre! Sink your teeth into a generous serving of soft white carrot cake or a full-flavoured bowl of Laksa.



**3**  
**FOOD AT RAIL MALL**  
📍 380 Upper Bukit Timah Road

Located right next to the Rail Corridor, Rail Mall features a range of restaurants. From vegetarian and vegan cafes to restaurants that offer Japanese and Western cuisine, you'll be spoilt for choice here.



**4**  
**BUKIT PANJANG HAWKER CENTRE AND MARKET**  
📍 2 Bukit Panjang Ring Road

With over 28 food stalls, Bukit Panjang Hawker Centre serves up tasty food choices at affordable prices. Treat yourself to Lor Mee with thick gravy and fresh chunks of fried fish fillet or a flavour-packed bowl of prawn noodles!



**5**  
**FOOD ALONG SIXTH AVE**  
📍 Sixth Avenue

Dotting the streets of Sixth Ave are several eateries and cafes that serve a variety of quality dishes with varied price points. Head down today and enjoy a hearty brunch at a cafe or fishball noodles at a coffeeshop!



**6**  
**GHIM MOH MARKET AND FOOD CENTRE**  
📍 20 Ghim Moh Road

Known for its affordable mouthwatering food dishes, Ghim Moh Food Centre is a neighbourhood gem that houses over 70 well-loved food stalls! Dig in to a plate of Char Kway Teow packed with rich flavour or a sweet and sour bowl of Mee Siam.



# TRACING OUR ROOTS

Our neighbourhoods are rich with heritage and history. Take a walk down the streets and you will find historical places and conserved architecture, each with a story to tell.

①



LET'S BE CONSIDERATE



When visiting various heritage sites, refrain from making too much noise out of respect. Together, let's create a pleasant experience of our cultural heritage!

①

## MASJID AL-HUDA

📍 34 Jalan Haji Alias

Al-Huda Mosque traces its history back to the early 1900s when it was known as Masjid Kampong Coronation because of its location. Back then, it was a beautiful and prominent mosque that serves villagers residing in the Bukit Timah area. The locals fondly call it Masjid Kampong Tempeh because it was situated within a local village famous for producing traditional homemade tempeh—a fermented snack made from soybeans!

②

## ST JOSEPH'S CHURCH

📍 620 Upper Bukit Timah Road

Built by French missionaries in 1846, the church intended to serve Chinese Catholic immigrant workers who were working in Singapore. It was also among the few with the traditional design of an attached cemetery and a pagoda-type tower.

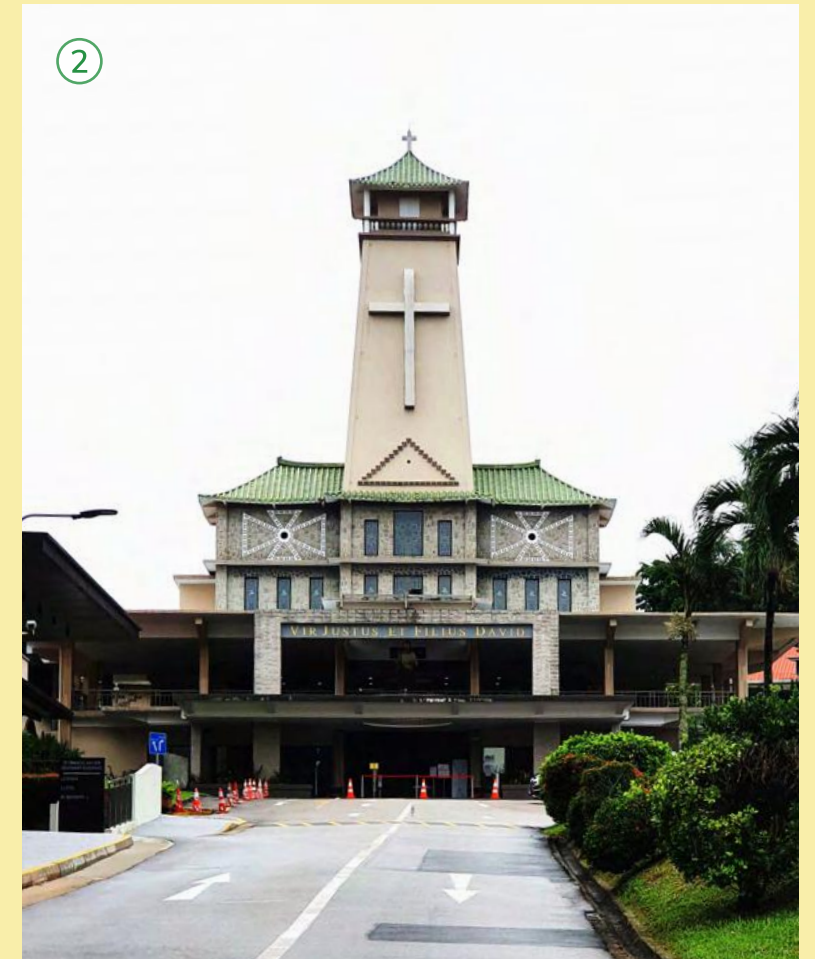
③

## SRI ARASAKESARI SIVAN TEMPLE

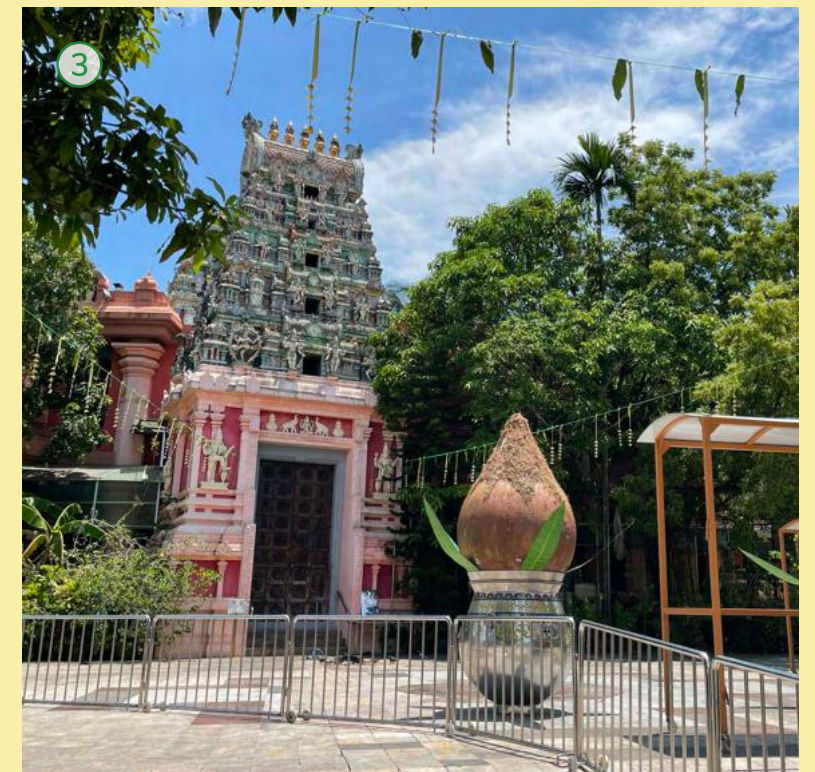
📍 25 Sungei Kadut Avenue

Sri Arasakesari Sivan Temple is nestled in a serene environment surrounded by greenery. It also has a pond within its compound. Today, the temple runs various projects such as food distribution to residents in the vicinity.

②



③



4a



4

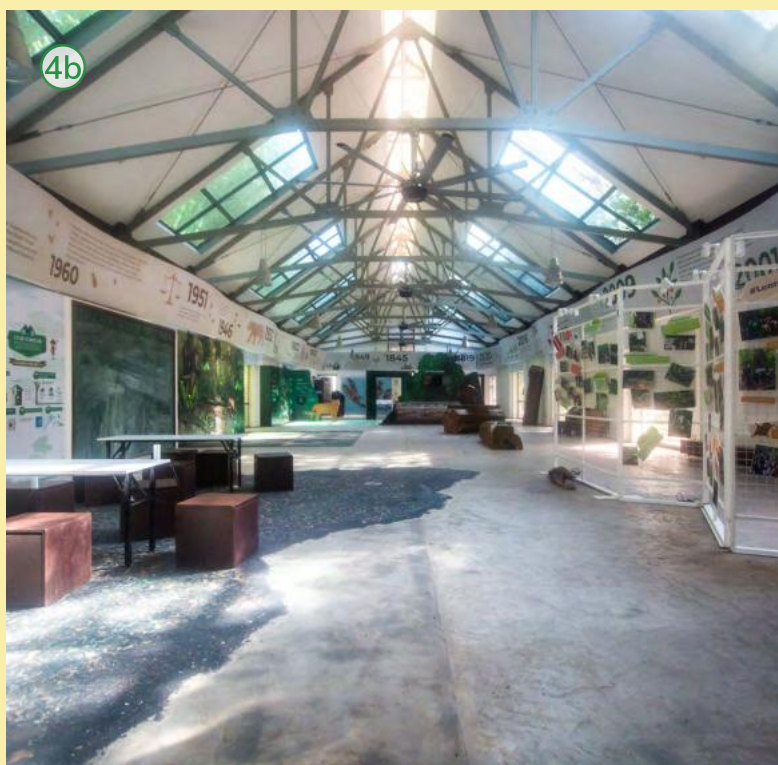
## DAIRY FARM NATURE PARK

📍 Along Dairy Farm Road

In the 1930s, this nature park in Bukit Timah used to be a dairy farm that provided a fresh supply of milk to Singapore's expatriate community.

By the 1970s, dairy farming was no longer economically viable, and the site was developed into the Dairy Farm Nature Park in 2007. Visitors to this park can look forward to visiting the Wallace Education Learning Laboratory, a cowshed and a black and white timber farmhouse.

4b



5

## ADAM ROAD PRESBYTERIAN CHURCH

📍 25 Adam Road

Led by Pastor Richard Ng, with a small congregation of 16 people in 1983, Adam Road Presbyterian Church has grown to become a significant church hosting regular service, virtual camps, talks on mental wellness and online podcasts.

6

## SINGAPORE BUDDHIST YOUTH MISSION

📍 3306 Commonwealth Avenue West

Identified by its iconic gold-plated Buddha structure, the Buddhist Youth Mission, which was founded in 1965, presents a serene and welcoming interior for devotees to say their prayers and perform rituals.

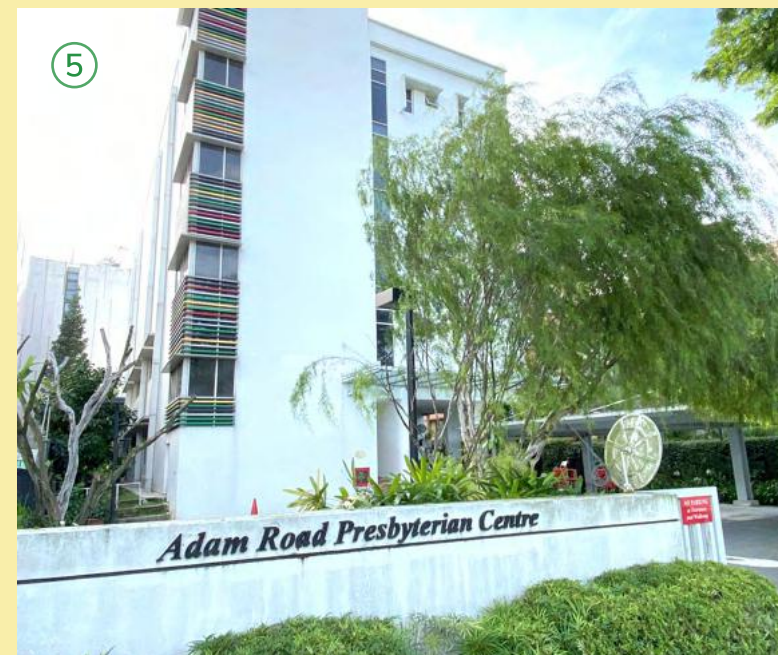
7

## BEEH LOW SEE BUDDHIST TEMPLE

📍 71B Jalan Jurong Kechil

Founded in 1935, this temple was originally the San Bao Old Folk Home which served as a refuge for people during the war. Today, the temple is beautifully decorated with an ancient gate, green glazed tiles and a stone lion entrenched outside the main door.

5



6



7





# FUN IN THE SUN

If you prefer to be out and about, working out in green spaces or just taking leisurely walks, add these outdoor neighbourhood spaces to your list for your next day out in the sun.



LET'S KEEP CLEAN

While visiting outdoor spaces or exhibits, let's ensure we keep our surroundings clean for the next visitor to enjoy it as we did. Remember to discard your litter properly!



## MANDAI WILDLIFE RESERVE

### 1 SINGAPORE ZOO

📍 80 Mandai Lake Road

Get up close and personal with the animals at the Singapore Zoo by participating in feeding animals such as elephants, giraffes and goats! The Singapore Zoo's naturalistic exhibits allow visitors to experience the wonders of wildlife.

### 2 RIVER WONDERS

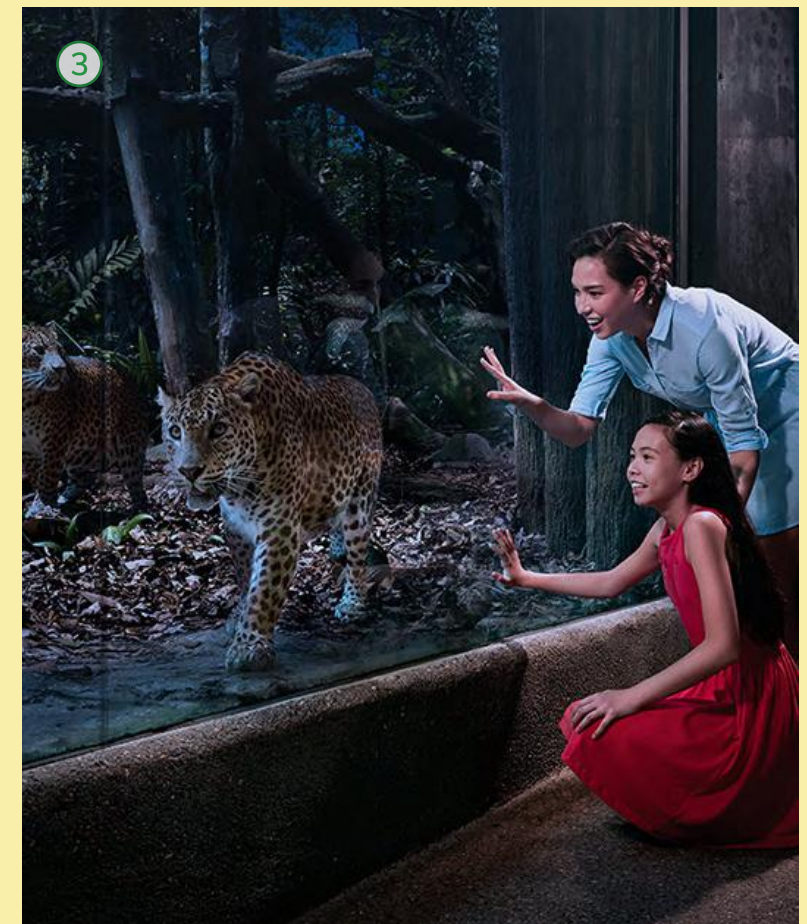
📍 80 Mandai Lake Road

Located between the Singapore Zoo and Night Safari, the River Wonders is Asia's first ever river-themed wildlife park. Come take a look at and snap pictures of the adorable giant pandas, Kai Kai and Jia Jia!

### 3 NIGHT SAFARI

📍 80 Mandai Lake Road

Join in the fun at the World's first nocturnal wildlife park! Visitors to the Night Safari can choose to embark on a walking trail or take a tram to see animals such as the Fishing Cat, Malayan Tapir and Slow Loris.



## SCENIC HIKES

4

### RAIL CORRIDOR

📍 Upper Bukit Timah Road

Discover the biodiversity and heritage of Bukit Timah at the Rail Corridor! Visitors can go on a walk to discover several iconic landmarks such as the old Bukit Timah Railway Station and the Upper Bukit Timah Road truss bridge.

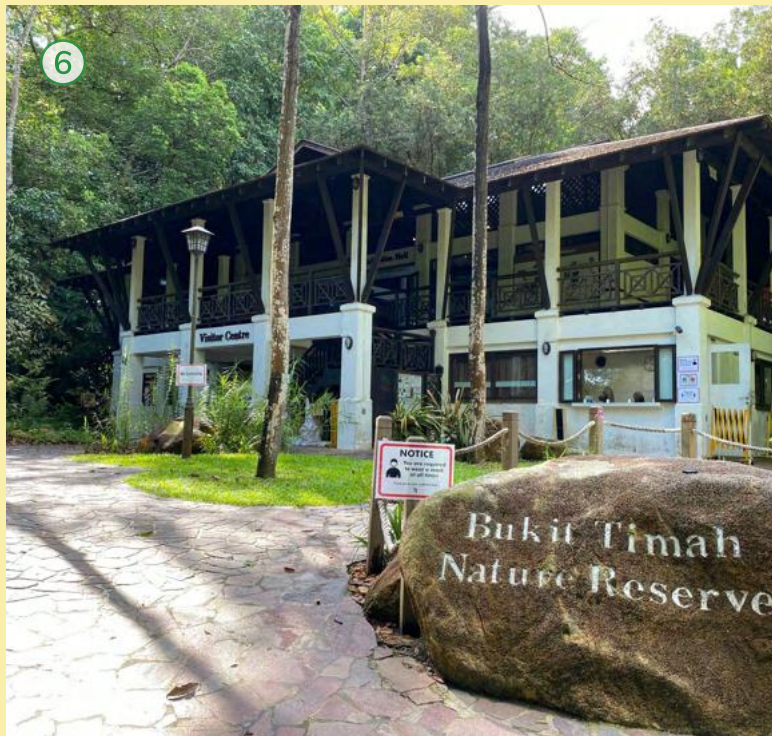


5

### BUKIT PANJANG NEIGHBOURHOOD 5 PARK

📍 Saujana Road

Covered in lush greenery and beautiful flora and fauna, visitors can look forward to walking, jogging, cycling and bird-watching in this park.



6

### BUKIT TIMAH NATURE RESERVE

📍 End of Hindhede Drive

Being one of the largest, richest ecological systems and the highest hill in Singapore, visitors to Bukit Timah Nature Reserve can look forward to basking in the beauty of nature and scaling the 163m Bukit Timah Hill.



7

### HINDHEDE QUARRY

📍 Hindhede Nature Park

Named after the Danish engineer Jens Hindhede, the Hindhede Quarry at Bukit Timah Hill is designed to be the perfect hiking spot for the entire family!

## NATURE PARKS

8

### DAIRY FARM NATURE PARK

📍 Along Dairy Farm Road

Boasting a wide range of flora and fauna such as fruit trees and Southeast Asian bird species here, nature geeks can look forward to basking in the beauty of Dairy Farm Nature Park.



9

### ZHENGHUA NATURE PARK

📍 Segar Road, Bangkit Road, Chestnut Avenue

The green spaces in this nature park connect forested areas with nature reserves, thus providing a safe passage for fauna. With over 37 bird species in this park, it is the perfect spot for bird-watching.



10

### CHESTNUT NATURE PARK

📍 Chestnut Avenue

Chestnut Nature Park is the largest nature park in Singapore that offers separate mountain biking and hiking trails.

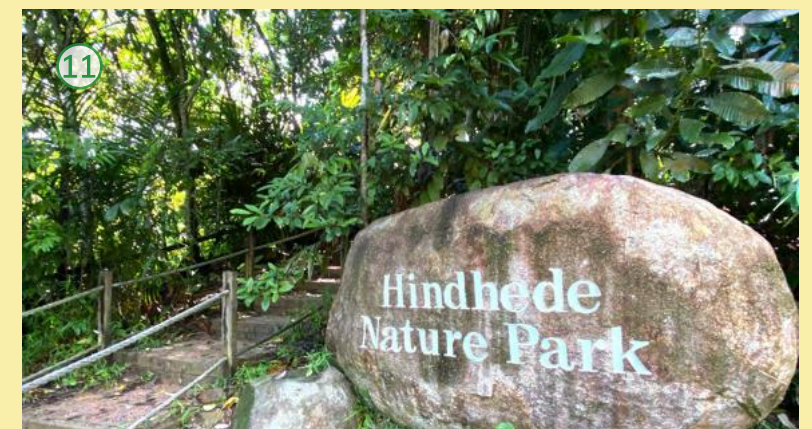


11

### HINDHEDE NATURE PARK

📍 Hindhede Drive

With easy trails and well-defined footpaths, Hindhede Nature Park is well-suited for both young and old, and perfect for a family day out.



# CONNECT WITH COMMUNITY SPACES



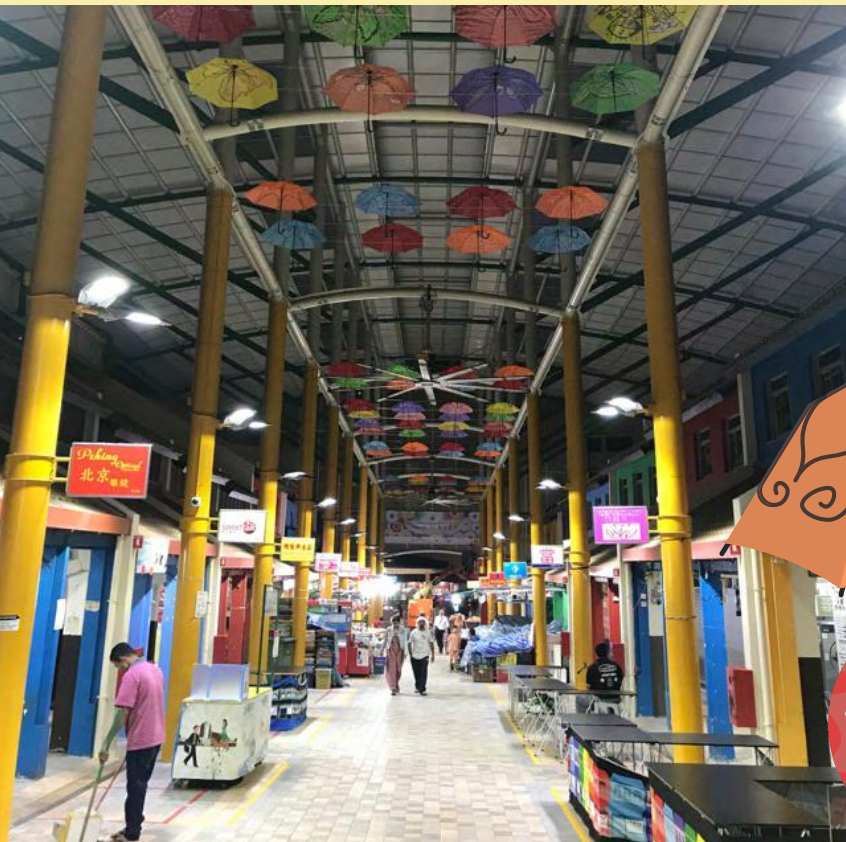
Immerse in the communal spaces of your neighbourhood. Take the first step to say hello to your friendly neighbours and you might even gain a few buddies along the way.

## BANGKIT ARTS STREET

 Bangkit Road

Upgraded to be weather-proof and barrier-free during the Bangkit Neighbourhood Renewal Programme, the corridor between two rows of shops in Blocks 258 and 260 were transformed into the Bangkit Arts Street Corridor.

The space is used by arts and performance groups, craft groups, and individuals to sell their work or put up performances, workshops and showcases.



Vibrant activities, such as singing performances by the older generation, art showcases, and the annual Lunar New Year Light Up enliven the streets and bring joy to the residents in the area.



## PANG SUA POND

 101 Bukit Panjang Road

Initially built in the 1990s, Pang Sua Pond was one of Singapore's 16 stormwater ponds to collect rainwater, increasing flood resilience for Bukit Panjang town. Following a 30-month makeover, it was officially opened in March 2017 by Prime Minister Lee Hsien Loong. Pang Sua Pond, which is next to Senja-Cashew CC, has since become part of the PUB Active, Beautiful, Clean (ABC) Waters Programme.

While its surroundings were kept natural, new facilities, such as a 480m boardwalk, lookout decks and floating stage, were included so that it could be a fun and beautiful place for families to relax and enjoy nature. The revamped pond also boasts a wetland feature which has proven to be a popular attraction for local and visiting residents alike!

# BE A PART OF THE COMMUNITY

Connect with your community as you get to know people from all walks of life. Make like-minded friends and pick up new skills through fun-filled activities. A neighbourhood is not just about the places, it is also about the people.

## EZI CASH-FOR-TRASH



ezi Cash-For-Trash is a monthly recycling programme, in partnership with SembWaste to encourage residents to recycle and do their part in building a sustainable future.

Visit Zhenghua CC for more information.

## MAYFAIR PARK DOG RUN



The Mayfair Park Dog Run is the first dog run in the Bukit Timah neighbourhood. Meet like-minded pet owners while the furkids have fun running together unleashed.

Visit Bukit Timah CC for more information.

## CASHEW BLOOD DONATION DRIVE



In collaboration with Singapore Red Cross, Cashew Community Emergency and Engagement (C2E) Committee organises quarterly blood donation drives at Senja-Cashew CC.

Visit Senja-Cashew CC for more information.

## PLOGGING



Volunteers from the Ulu Pandan and Bukit Timah Youth Networks jog along the Rail Corridor from Bukit Timah to Ulu Pandan while collecting litter along the way.

Visit Bukit Timah CC or Ulu Pandan CC for more information.

## HARI RAYA KUEH DISTRIBUTION FOR THE NEEDY



It has been a tradition of the Bukit Panjang neighbourhood to spread the festive joy and encourage the spirit of giving during the fasting month of Ramadan through annual distributions of Hari Raya goodies or porridge to needy residents.

Visit Bukit Panjang CC for more information.

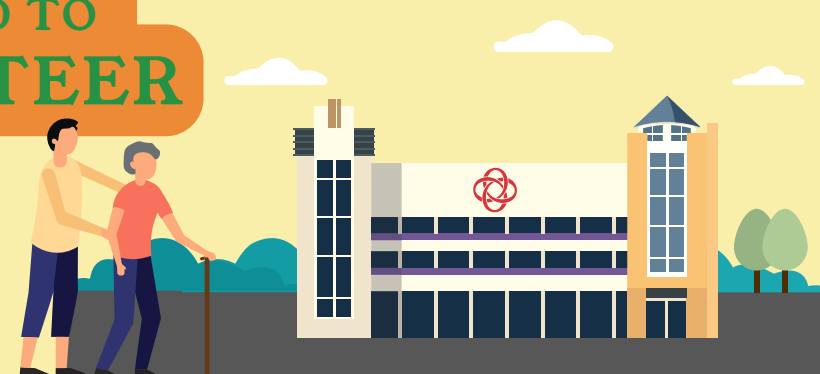
## ONE COMMUNITY FIESTA @ HOLLAND-BUKIT TIMAH GRC & BUKIT PANJANG SMC



One Community Fiesta is organised by Integration and Naturalisation Champions, together with grassroots organisations and community partners. It brings families, neighbours and friends to bond and to appreciate Singapore's rich and diverse cultures.

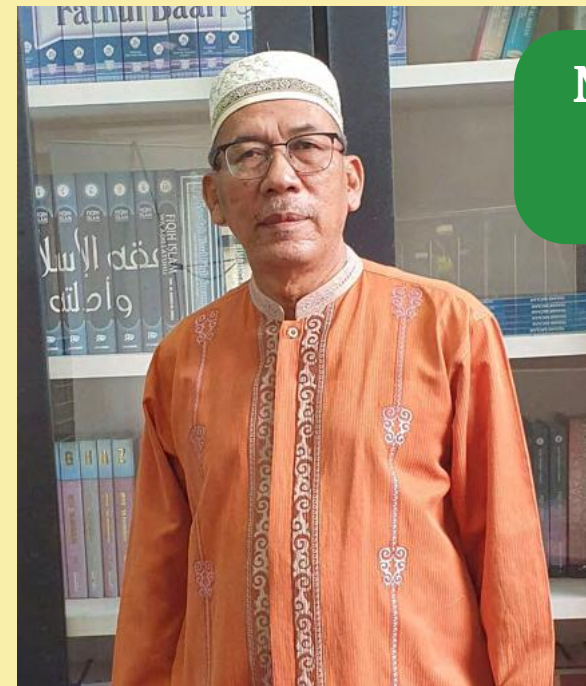
## STEP FORWARD TO VOLUNTEER

Keep a lookout for volunteering opportunities in your neighbourhood today! Join an initiative and lend a helping hand. Together, we can make our neighbourhood a better place for everyone!



# PEOPLE OF THE NEIGHBOURHOOD

Get to know your neighbours through their tales and experience the neighbourhood through their eyes. As you explore the neighbourhood and participate in the community, you may just bump into one of them. When you do, don't be shy, say hi!



MEET  
**Ishak**

Ishak is a friendly neighbour and an active Grassroots Leader in the Cashew community. He is active at Al-Iman mosque and does his best to serve the Muslim community. Being a key member of our community, he has organised numerous activities to promote social bonding, such as getting involved in community break fast during Ramadan (fasting month for the Muslim community). He is also constantly reaching out to residents in need, actively participating in the distribution of food rations and *korban* meat (Hari Raya Haji sacrificial meat) to low-income families.



MEET  
**Lily**



A zealous and committed Integration and Naturalisation Champion (INC) at Cashew Constituency, Lily and her volunteers promote social integration by engaging residents of different nationalities and backgrounds in interactive programmes, such as INC Fiesta and movie screenings.

As the Chairperson of the Cashew Community Emergency and Engagement Committee (C2E), she organises blood donation drives regularly at Senja-Cashew CC. Her dedication to the cause inspires others to be a donor to help save lives. Her desire to make the community a better place serves as a true inspiration to all!





# MEET Angie

Known for her passion and dedication towards the community, Angie is a prominent grassroots leader at Ulu Pandan Constituency.

Angie has been involved in numerous community activities for those with less means and has spearheaded several food ration distribution exercises for the residents of Ghim Moh. She has dedicated her life to serving the residents of Ghim Moh and is always ready to meet their needs, even on a personal basis. Her selflessness and compassionate acts towards the residents of Ghim Moh serve as a reminder of the role model she is to many!



# MEET Bobby

Bobby has been volunteering in Bukit Panjang since 1998. He is the Chairman of Bukit Panjang ComCare and has been assisting in this committee since 2007. A selfless and compassionate individual, Bobby did not hesitate to help with the nationwide distribution of masks and Antigen Rapid Test (ART) kits during the pandemic.

Bobby finds it a rewarding and exciting journey to be able to help build relationships in the community. Bringing people of different backgrounds together to meet, interact and raise awareness about community issues as well as helping those in need, keeps him motivated to continue his volunteering journey.



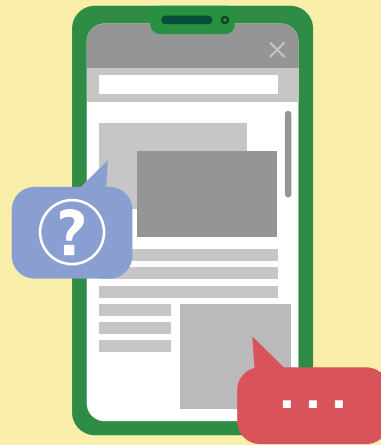
# MEET Rani

Rani is the Chairperson of Community Club Management Committee (CCMC) in Zhenghua. She is a mother of five and has been volunteering her time fervently for over 23 years. Besides zealously conducting dengue awareness house visits at dengue clusters, she actively pulls resources together to organise annual blood donation drives to save lives. Her down-to-earth nature and evergreen smile give her the ability to bring people from all walks of life together, making great differences in people's lives. According to her, volunteer work is an extension of her family and she leads her committee in ways similar to how she runs her family.



# DIGITAL SERVICES

Stay updated on Singapore's services with these mobile applications and websites.



## MOBILE APPS

### EAPPT@ICA

This ICA mobile app allows you to:

- Book an appointment with ICA to complete their application processes
- View existing appointments at the appointments tab
- Locate SingPost outlets for collection of ICA certificates

### MYENV

This weather and environment app:

- Provides you with location-based weather information
- Allows you to call NEA
- Make a report to NEA attaching photos and videos

### MYTRANSPORT.SG

This transport mobile app allows you to:

- Access your frequently used bus information and traffic services
- Manage push notifications to receive MRT or road alerts
- Plan your trip with different transport options

### NLB MOBILE

The library service allows you to:

- Set up multiple user profiles & borrow library materials (e-books)
- Pay fees online
- View loan and reservation items
- View events happening at libraries

### ONESERVICE

This government app allows you to report the following issues in your neighbourhood:

- Cleanliness issues
- Maintenance of roads and footpaths
- Water supply and drains issues
- Pest related issues
- Horticultural issues
- Animal related issues

### PARKING.SG

This parking app allows you to:

- Calculate parking fees
- Pay for parking online
- Make changes to your parking sessions

### PAYNOW

This banking app allows you to:

- Transfer money instantly and with ease just by using phone number or NRIC

### SGSECURE

This SGSecure app allows you to:

- Receive broadcast messages during an emergency
- Locate the nearest AED in your vicinity
- Send information and files to authorities in any situation you saw

### WIRELESS@SGX

The Wireless@SGx app allows you to:

- Allow your device to automatically connect to Wireless@SGx network
- Locate the Wireless@SGx spots on an interactive map
- Run diagnostics that can help improve the network
- Receive important updates

## WEBSITES

### COMMUNITY

People's Association (PA)  
[www.pa.gov.sg](http://www.pa.gov.sg)

Ministry of Culture, Community and Youth  
[www.mccy.gov.sg](http://www.mccy.gov.sg)

Ministry of Social and Family Development  
[www.msf.gov.sg](http://www.msf.gov.sg)

Singapore Together  
[www.sg](http://www.sg)

### EDUCATION

Ministry of Education (MOE)  
[www.moe.gov.sg](http://www.moe.gov.sg)

### IMMIGRATION

Immigration & Checkpoints Authority (ICA)  
[www.ica.gov.sg](http://www.ica.gov.sg)

### LABOUR

Ministry of Manpower (MOM)  
[www.mom.gov.sg](http://www.mom.gov.sg)

### POSTAL

SingPost  
[www.singpost.com](http://www.singpost.com)

### PUBLIC HOUSING

Housing and Development Board (HDB)  
[www.hdb.gov.sg](http://www.hdb.gov.sg)

Town Councils  
[www.towncouncils.sg](http://www.towncouncils.sg)

### TAX

Inland Revenue Authority of Singapore (IRAS)  
[www.iras.gov.sg](http://www.iras.gov.sg)

### TRANSPORT

Land Transport Authority (LTA)  
[www.lta.gov.sg](http://www.lta.gov.sg)

TransitLink  
[www.transitlink.com.sg](http://www.transitlink.com.sg)



# WELCOME TO OUR NEIGHBOURHOOD

## NEIGHBOURHOOD POLICE CENTRE/ POST

**Bukit Panjang Neighbourhood Police Centre**

Address: 1 Segar Road,  
#01-05, S677738  
Tel: 1800 892 9999

**Bukit Panjang South Neighbourhood Police Post (e-Kiosk)**

Address: 124 Pending Road,  
#01-00, S670124

**Bukit Timah Neighbourhood Police Centre**

Address: 1 Duke's Road,  
S268914  
Tel: 1800 462 9999

**Bukit Timah Neighbourhood Police Post**

Address: 1 Toh Yi Drive,  
#01-139, S591501  
Tel: 1800 468 9999

## SINGAPORE POST OFFICE

**Bukit Timah Branch**

Address: 20 Toh Yi Drive,  
#01-05, S596569

**Ghim Moh Branch**

Address: 21 Ghim Moh Road,  
#01-225, S270021

## COMMUNITY LIBRARY

**Bukit Panjang Public Library**

Address: 1 Jelebu Road,  
#04-04 & #04-16/17, Bukit  
Panjang Plaza, S677743

## POLYCLINIC

**Bukit Panjang Polyclinic**

Address: 50 Woodlands  
Road, S677726

## TOWN COUNCIL OFFICE

**Holland-Bukit Panjang Town Council (Bangkit Office)**

Address: 256 Bangkit Road,  
#01-71, S670256  
Tel: 1800 766 9100  
(During Office Hours)  
1800 275 5555  
(After Office Hours)

**Holland-Bukit Panjang Town Council (Ghim Moh Office)**

Address: 3 Ghim Moh Road,  
#01-298, S270003  
Tel: 1800 766 9100  
(During Office Hours)  
1800 275 5555  
(After Office Hours)





## WELCOME TO THE NEIGHBOURHOOD!

We hope that you will enjoy our neighbourhood as much as we do. Remember this is just the beginning, there's so much more that awaits you in our friendly neighbourhood!

Our community is always here for you. Reach out to us, we are just a phone call or email away!

Stay abreast of community  
integration programmes:  
[facebook.com/pa.integration](https://www.facebook.com/pa.integration)

## ABOUT PEOPLE'S ASSOCIATION

The People's Association was established on 1 July 1960 to promote racial harmony and social cohesion in Singapore. Our mission is to build and bridge communities in achieving one people, one Singapore.

The People's Association offers a wide range of programmes and volunteering opportunities for Singaporeans from all walks of life through a network of over 2,000 Grassroots Organisations, over 100 Community Clubs, five Community Development Councils, National Community Leadership Institute and PASSion WaVe.



More information at [www.pa.gov.sg](http://www.pa.gov.sg)

or scan the QR code below:



# IMPORTANT INFORMATION

## EMERGENCY CONTACTS

Emergency Ambulance and Fire  
995

Non-Emergency Ambulance  
1777

Police Emergency  
999

Police Emergency SMS (if not possible to call)  
71999

Police Hotline (for crime-related information)  
1800 255 0000

Fire Hazard Reporting (SCDF)  
1800 280 0000

## USEFUL CONTACTS

Essential Maintenance Service Unit (for common estate areas)  
1800 275 5555

Building & Construction Authority (to report structural defects in condominiums and non-public housing buildings)  
1800 342 5222

General Utilities  
1800 778 8888 (SP Group)  
1800 225 5782 (PUB)  
1800 752 1800 (City Gas)

Community Mediation Centre (for neighbour disputes)  
1800 225 5529

National Environment Agency  
6225 5632

Public Utilities Board (to report floods/drain obstructions)  
1800 225 5782

Land Transport Authority (for roads, crossings, bus services/stops)  
1800 225 5582

National Parks Board  
1800 471 7300

Animal & Veterinary Service  
1800 476 1600

# COMMUNITY CLUBS

## BUKIT PANJANG

Bukit Panjang Community Club  
Address: 8 Pending Road, S678295  
Tel: 6506 0900



Facebook

## BUKIT TIMAH

Bukit Timah Community Club  
Address: 20 Toh Yi Drive, S596569  
Tel: 6466 2912



Facebook

## CASHEW

Senja-Cashew Community Club  
Address: 101 Bukit Panjang Road, S679910  
Tel: 6219 4561



Facebook

## ULU PANDAN

Ulu Pandan Community Club  
Address: 170 Ghim Moh Road, #01-01, S279621  
Tel: 6463 7333



Facebook

## ZHENGHUA

Zhenghua Community Club  
Address: 1 Segar Road, S677738  
Tel: 6310 6702



Facebook

