



YOUR Neighbourly WELCOME GUIDE

LET'S EXPLORE
Marsiling-Yew Tee GRC



Singapore Together is about the Government working with Singaporeans, and Singaporeans working with one another, to build our future Singapore. The Government will open up more partnership opportunities for Singaporeans to participate. The Government also hopes to support more citizen-led efforts. Whatever our background or interests, we can each step forward to contribute in areas that we care about. By working together, we can turn diversity into strength and transform challenges into opportunities, to build a Singapore that present and future generations of Singaporeans will be proud of.



No part of this guidebook may be reproduced without the written permission of People's Association. All rights reserved.

Photo Disclaimer:
Several photographs in this book were taken during the pre-COVID-19 period.

Copyright © 2021 by People's Association.
All information is correct at time of publication (September 2021).

My Neighbourhood, My Home!

Singapore is a multi-racial society that celebrates the diversity and vibrancy of different cultures, ethnicities and religions. What better way to discover the gastronomical cuisines, heritage and architectural landmarks and recreational activities than to start with a leisurely stroll around your neighbourhood. An initiative of the People's Association, "Your Neighbourly Welcome Guide" contains colourful anecdotes and well-kept secrets from residents and volunteers. These unique stories of places, activities and experiences are happening right in your neighbourhood.

Discover Marsiling-Yew Tee GRC and other neighbourhoods through the e-guides here:
www.pa.gov.sg/our-programmes/community-integration



Welcome to Our Neighbourhood!

Po7 Food Hunt

- Wide range of food choices at Marsiling and Woodgrove
- Popular well-loved traditional eats
- Famous Lor Mee at Limbang and more!

Pr3 Fun In The Sun

- Marsiling Park at Marsiling
- Woodlands Skatepark at Woodgrove
- KF1 Karting Circuit at Limbang and more!

P19 Be A Part Of The Community

- Yew Tee's Happy Kopitiam series on Facebook Live
- Monthly Brisk Walk at Limbang
- Marsiling Cares and more!

Po9 Tracing Our Roots

- A Hindu temple with an eye-catching architecture
- A mosque with an iconic tall blue minaret
- The Kranji War Memorial and more!

Pr7 Connect With Your Community

- Woodgrove's annual Halloween event
- PAssion Community Football @ Marsiling-Yew Tee GRC

P21 People Of The Neighbourhood

- The Caring Big Sister
- The Friendly Photographer
- The Compassionate Kakak



MORE ABOUT SINGAPORE



FOOD PARADISE

Ask almost anyone, and they will tell you eating is one of our favourite things to do! Our multicultural identity has opened us to the wide variety of different cuisines and culinary trends. A definite treat for your taste buds, experience the richness of our different spices, coconut and pandan as you chew into our flavourful local delights which you can find around the corner.



FESTIVALS & CULTURES

As a vibrant cityscape with many cultures, Singapore has many festivals and events for everyone to participate in. People from all different racial and cultural backgrounds can enjoy exciting festivals like the Chingay festival, Thaipusam, Deepavali, Hari Raya Puasa and Mid-Autumn festival.



THE OLD & THE NEW

Old shophouses amidst shiny new skyscrapers. In Singapore, one way we keep our history alive is through active conservation. A lot of the old houses, shophouses and places of significance have been preserved to remind us of our roots. Some of these places are where early immigrants lived or worked. While exploring our neighbourhoods, you will find charming old-school places woven into our cosmopolitan lifestyle and given new lives as eateries, shops, or other indulgences.

Experience a slice of Singapore right in your neighbourhood! Discover an eclectic mix of food, heritage, shopping, culture and more right at your doorstep and mingle with people at your community through fun-filled workshops and events.

#youneighbourlywelcomeguide



📍 Marsiling Park

Explore Marsiling-Yew Tee GRC

Welcome to our neighbourhood! You can find spaces that are reminiscent of Singapore's World War II past in Yew Tee and Limbang. Marsiling and Woodgrove offer up many mouth-watering dishes, scenic parks as well as exciting community activities and events for you to take part in.



A MULTI-FACETED NEIGHBOURHOOD

 Marsiling-Yew Tee GRC

From traditional local cuisine to scenic panoramic views; from exhilarating karting fun to various forms of community activities, you will never run out of things to explore in the Marsiling-Yew Tee neighbourhood, made up of Limbang, Marsiling, Woodgrove and Yew Tee.

INTRODUCING MARSILING-YEW TEE GRC

FOOD HUNT



From savoury dishes to sweet snacks or desserts, a plethora of food options awaits the adventurous foodie. Explore a variety of local eats right in your neighbourhood today!



KEEP OUR TABLES CLEAN

In Singapore, it's mandatory for diners to return their trays and clear their tables at public dining places such as hawker centres. Let's keep our hawker centres clean again!



1 FOOD ALONG MARSILING MALL

📍 4 Woodlands Street 12

With over 70 food stalls, residents in Marsiling and Woodgrove are spoilt for choice. Some of the well-loved favourites include a 35-year-old seafood soup stall famous for its umami soup broth with ingredients handpicked fresh daily.

2 FOOD CENTRE AT 20 MARSILING LANE

📍 20 Marsiling Lane

Find a variety of local delights at this food centre. Enjoy authentic *Nasi Padang* here at affordable prices or a traditional bowl of prawn noodles packed with sweet savoury flavours.

3 COFFEESHOP AT 354A WOODLANDS AVENUE 1

📍 354A Woodlands Avenue 1

Head on down to Block 354A Woodlands coffeeshop and choose from 10 different stalls to satisfy your hunger. The coffeeshop includes a Japanese stall offering affordably priced rice bowls with choice of beef, chicken, pork, salmon, saba, prawn and unagi.

4 COFFEESHOP AT 515A WOODLANDS DRIVE 14

📍 515A Woodlands Drive 14

This regular coffeeshop hides a unique find. Besides offering the usual black Rojak (an oriental fruit salad tossed in a dark sticky sauce), it also offers a white Rojak, the same salad served with sweet-sour plum dressing.

5 COFFEESHOP AT 787 CHOA CHU KANG DRIVE

📍 787 Choa Chu Kang Drive

Long queues are a common sight at this coffeeshop thanks to a famous *Lor Mee* stall. People travel all over from Singapore for a bowl of gravy noodles with a variety of toppings such as handmade pork balls or fried fish.

6 COFFEESHOP ALONG CHOA CHU KANG CRESCENT

📍 678A Choa Chu Kang Crescent

This coffeeshop offers a variety of local fare. Check out the Indian food stall for a hearty meal inclusive of a flavourful plate of *Chicken Biryani* with a side of crunchy *Papadum*.

TRACING OUR ROOTS

Our neighbourhoods are rich with heritage and history. Take a walk down the streets and you will find historical places and conserved architecture, each with a story to tell.



RESPECTING HERITAGE

When visiting various heritage sites, refrain from peeking around or making too much noise out of respect. Together, let's create a pleasant experience of our cultural heritage!

1 SRI SIVA KRISHNA TEMPLE

📍 31 Marsiling Rise

Displaying an admirable Dravidian architecture adorned with regal sculptures of Hindu deities, the Sri Siva Krishna Temple is a favoured spot for Hindu worshippers in the vicinity.



2 CHOA CHU KANG LIAN HE TEMPLE

📍 11 Choa Chu Kang Street 51

Choa Chu Kang Lian He Temple is a popular combined temple made up of five temples in the North-West region. This concept of combined temples was started in 1990s due to land acquisition for urban redevelopment.



3 HEBRON BIBLE PRESBYTERIAN CHURCH

📍 10 Choa Chu Kang Street 52

Hebron had its humble start in 1971 as a Sunday worship service held in a HDB flat for a group of ten. Now, Hebron sees a weekly attendance of 800 across four main services, many of whom are residents in the vicinity.



4 MASJID AN-NUR

📍 6 Admiralty Road

Identified by its tall minaret painted in a light blue colour, the Masjid An-Nur is known for its strong outreach programmes. Built in the 1980s, it has become a popular landmark and place of worship for Muslims in the community.



5

KRANJI WAR MEMORIAL

📍 9 Woodlands Road

The Kranji War Memorial site was once a large ammunition magazine during the Japanese invasion of Malaya. Prisoners at Kranji started a small cemetery at Changi after the reoccupation of Singapore. In 1946, the graves from Changi, Buona Vista Military Cemetery, and other graves from other parts of the island were moved to Kranji.

The Singapore Memorial can also be found within Kranji War Memorial. It bears the names of approximately 24,000 casualties who have no known grave.



Using the Singapore Memorial as a marker, there are three other memorials: The Singapore (Unmaintainable Graves) Memorial to the west, The Singapore Cremation Memorial which stands immediately behind, and The Singapore Civil Hospital Grave Memorial to the east. Today, you'll find more than 4,400 white gravestones lined up in rows within the cemetery.

6

HONG THO BILW TEMPLE

📍 31 Marsiling Industrial Estate Road 3

Painted in hues of red, gold and blue, the entrance to Hong Tho Bilw stands out against other buildings in the Marsiling industrial estate. Upon entering the temple, visitors can expect a peaceful atmosphere, perfect for them to practise their worship.

7

CHURCH OF SAINT ANTHONY

📍 25 Woodlands Avenue 1

In the early 1900s, the Church of Saint Anthony started as a small wooden chapel. Today, the church is housed in a modern building with stained glass windows adorned with beautiful religious paintings.

8

SRI ARASAKESARI SIVAN TEMPLE

📍 25 Sungei Kadut Avenue

With a pond within its compound, the Sri Arasakesari Sivan Temple has a very serene ambience surrounded by greenery. The temple runs various projects such as food distribution to residents in neighbouring HDB blocks.



FUN IN THE SUN

If you prefer to be out and about, working out in green spaces or just taking leisurely walks, add these outdoor neighbourhood spaces to your list for your next day out in the sun.



FOOTPATH COURTESY



Remember that we share a common footpath. If you are a cyclist, please give way to pedestrians and ring your bell politely in advance to alert them if needed.

1 MARSILING PARK

📍 Woodlands Centre Road

With its lush greenery and scenic views of a picturesque pond, Marsiling Park serves as a peaceful respite from the bustle of city life. Bring your family on a walk and bask in the lovely outdoors at Marsiling Park!

2 WOODLANDS TOWN PARK EAST

📍 Along Woodlands Street 13

Want to catch a panoramic view of Marsiling town? Visit Woodlands Town Park East where you can climb to the top of its hill to catch sweeping scenic views of the surroundings. Unwind and relax at this amazing hilltop spot!

3 SKATEPARK AT WOODGROVE

📍 Woodlands Drive 50

Want to learn some cool skating tricks? Head on down to Woodlands Skatepark! Located beside Woodlands Station and decked with ramps and rails, this park is perfect for anyone looking to practise their cool skate tricks.

4 KF1 KARTING CIRCUIT

📍 1 Turf Club Avenue

Looking to do something fun with your family? KF1 Karting Circuit has got you covered! This karting circuit is the world's first and only dual-direction track that offers fun racing activities for everyone. Come enjoy a fun-filled karting day!

*Photo courtesy of KF1 Karting Circuit



A LEISURELY STROLL

Follow this route to discover some interesting outdoor places in our neighbourhood!



1 PANG SUA CANAL

The Pang Sua Canal consists of a fishing and viewing deck which promises a scenic view of the water. With the new Villa Verde bridge and underpass, you will now be able to conveniently access and stroll along the canal or embark on a hike through the Rail Corridor!



2 YEW TEE PARK

Stop by Yew Tee park and bask in the lush greenery of this beautiful park. With its running track, basketball court and huge playground, it will definitely be a fun-filled day for you and your family.



3 LIMBANG PARK

With a large playground, a fitness corner and open space, Limbang Park is the perfect place to wind down, relax and have a stroll outdoors with your family!



4 STAGMONT PARK

Find your way to Stagmont Park, a green leisurely space surrounded by HDB flats commonly used by residents to enjoy nature and outdoor activities.

Look out for the Park Connector Network (PCN)!

This path continues into other neighbourhoods through an island-wide greenery network known as the Park Connector Network. Look out for the PCN signages and maps as you navigate your way along the roads, scenic rivers and canals that link you to the major parks. Hop on a bicycle or simply jog along the park connectors!



CONNECT WITH YOUR COMMUNITY



Immerse in the culture and buzz of your neighbourhood. Take the first step to say hello to your friendly neighbours and you might even gain a few buddies along the way.

WOODGROVE'S ANNUAL HALLOWEEN EVENT

📍 Woodgrove Division

In celebrating and embracing diversity in our multi-cultural community, join us at our Woodgrove's Annual Halloween event where residents decorate their houses and welcome visitors from all over Singapore for a Spooktacular Halloween fun!

Since 2007, on the 31st of October, the streets of

Woodgrove avenue will be filled with plenty of Halloween decorations like Jack-o'-lanterns, cobwebs, vampires and skeletons.

During this day, eager children and adults dressed up in scary looking costumes will excitedly stroll down the streets knocking on the doors of Woodgrove residents as they seek to secure



some sweet candy through trick-or-treating.

This Woodgrove Annual Halloween reflects the community spirit of Woodgrove residents who have been organising this event for years. It is their initiative and thoughtfulness that sparked this highly anticipated yearly Halloween gathering.



PASSION COMMUNITY FOOTBALL @ MARSILING-YEW TEE GRC

📍 Marsiling, Woodgrove, Yew Tee Divisions

A People's Association programme, the PASSion Community Football @ Marsiling-Yew Tee GRC is a weekly programme for children aged 5 to 12 years old. It is currently conducted in three different divisions of the neighbourhood—Marsiling, Woodgrove and Yew Tee.

The programme aims to promote family and community bonding while developing children's physical and social skills through football, regardless of gender. The programme also promotes racial harmony by creating opportunities for social interaction among a diverse range of participants.

BE A PART OF THE COMMUNITY

Connect with your community as you get to know people from all walks of life. Make like-minded friends and pick up new skills through fun-filled activities. A neighbourhood is not just about the places, it is also about the people.

HAPPY KOPITIAM SERIES



Happy Kopitiam is a virtual series on Facebook Live that engages residents on various local issues.

Visit Friends of Yew Tee Facebook Group for more information.

LIMBANG MONTHLY BRISK WALK



Monthly brisk walks are organised to encourage residents to adopt a healthy lifestyle. Join us today!

Visit Limbang Constituency Office for more information.

MAJULAH WALK AND RUN



Majulah Walk and Run is an annual event organised to celebrate Singapore's National Day.

(It was organised virtually in response to Covid-19.)

Visit Yew Tee CC for more information.

MARSILING CARES



Marsiling Cares is an outreach programme that aims to provide needy residents with more effective and targeted support through a range of different help initiatives ranging from tuition to monthly groceries distribution and social services.

Visit Marsiling CC for more information.

ONE COMMUNITY FIESTA @ MARSILING-YEW TEE GRC



One Community Fiesta is organised by Integration and Naturalisation Champions, together with grassroots organisations and community partners. It brings families, neighbours and friends to bond and appreciate Singapore's rich and diverse cultures.

STEP FORWARD TO VOLUNTEER

Keep a lookout for volunteering opportunities in your neighbourhood today! Join an initiative and lend a helping hand. Together, we can make our neighbourhood a better place for everyone!



PEOPLE OF THE NEIGHBOURHOOD

Get to know your neighbours through their tales, and experience the neighbourhood through their eyes. As you explore the neighbourhood and participate in the community, you may just bump into one of them. When you do, don't be shy, say hi!

MEET
Mdm Christy
Lee-O'Loughlin
THE RECYCLING ADVOCATE



A volunteer of community recycling and upcycling efforts in Woodgrove Zone 5 Residents' Committee, Mdm Christy is passionate about saving the environment and caring for the community. She initiated efforts to refurbish pre-loved furniture in good working condition for residents in need. Her upcycling idea gave old furniture found at trash bins a renewed lease of life.

She is currently working to grow vegetables in recycled bottles. She also hopes her efforts will result in more people enjoying repurposed and pre-loved items. Mdm Christy's ingenuity and kindness knows no bounds and she is a true inspiration to all!



MEET
Mdm Phang
Koei Hiong
THE CARING BIG SISTER

Known as the big sister (da jie da) of Yew Tee, Mdm Phang has been a long-serving grassroots leader, Family Life Champion and a registered solemniser for weddings.

She can commonly be seen engaging with senior citizens as part of the Silver Generation Office (SGO) outreach effort. Over her long period of service, Mdm Phang has built up a strong network in the Yew Tee community and has benefitted many residents with her kindness.



MEET
Mdm Munusamy
Kunasunthary
 THE PASSIONATE COOK

Mdm Kuna is a familiar face to residents who are passionate about cooking. She enjoys organising cooking demonstrations under the two committees that she serves in—Limbang Green Residents' Committee and Limbang Indian Activity Executive Committee (IAEC), and cooks Indian vegetarian and non-vegetarian dishes to cater to the different audiences in the Limbang division. When Mdm Kuna is not able to conduct physical cooking demonstrations due to safe management measures, she organises cooking sessions via Zoom, so that she can continue to engage the residents and impart her cooking skills to those who wish to learn. Her enthusiasm and generosity in sharing her knowledge and recipes have been greatly appreciated by fellow residents and volunteers alike and has helped reignite the kampung spirit within the Limbang community.



MEET
Mdm Toh Suat Hong
 THE ACTIVE BRISK WALKER

A member of Limbang Green Residents' Committee, Mdm Toh is an active brisk walker in Limbang. Before COVID-19, Mdm Toh would organise brisk walks almost every week. She did not allow the pandemic to dampen her spirit. She continues to organise monthly virtual sessions that focus on low-impact aerobics exercises. Mdm Toh's positive and indomitable spirit when it comes to exercise serves as an inspiration to all to follow in her footsteps.



MEET
Mr Foo Ce Wei
 THE FRIENDLY PHOTOGRAPHER



Ce Wei is an avid photographer who aims to capture happy memories of residents at grassroots activities. As an active grassroots leader, he has also organised outings for residents from different parts of Yew Tee to make friends and explore various places in Singapore together. Through his sharing sessions, Ce Wei hopes to inspire others to follow their passion and contribute to the community.

MEET
Mdm Norhazilah
Bte Ribot
 THE COMPASSIONATE KAKAK



Known for her compassion and leadership abilities, Mdm Norhazilah, a member of Marsiling Zone 5 Residents' Network, dedicates her time to serving her community through meaningful events and helping her community.

Mdm Norhazilah embraces the neighbourly spirit by cooking and playing games with the elderly and looking after the needs of vulnerable residents in the neighbourhood. Mdm Norhazilah's compassionate acts serve as a reminder of the role model she is to many!

DIGITAL SERVICES

Stay updated on Singapore's services with these mobile applications and websites.



MOBILE APPS

EAPPT@ICA

This ICA mobile app allows you to:

- Book an appointment with ICA to complete their application processes
- View existing appointments at the appointments tab
- Locate SingPost outlets for collection of ICA certificates

MYENV

This weather and environment app:

- Provides you with location based weather information
- Allows you to call NEA
- Make a report to NEA attaching photos and videos

MYTRANSPORT.SG SINGAPORE

This transport mobile app allows you to:

- Access your frequently used bus information and traffic services
- Manage push notifications to receive MRT or Road alerts
- Plan your trip with different transport options

NLB MOBILE

The library service allows you to:

- Set up multiple user profiles & Borrow library materials (e-books)
- Pay fees online
- View loan and reservation items
- View events happening at libraries

ONESERVICE

This government app allows you to report the following issues in your neighbourhood:

- Cleanliness issues
- Maintenance of roads and footpaths
- Water supply and drains issues
- Pest related issues
- Horticultural issues
- Animal related issues

PARKING.SG

This parking app allows you to:

- Calculate parking fees
- Pay for parking online
- Make changes to your parking sessions

PAYNOW

This banking app allows you to:

- Transfer money instantly and with ease just by using phone number or NRIC

SGSECURE

This SGSecure app allows you to:

- Receive broadcast messages during a emergency
- Locate the nearest AED in your facility
- Send information and files to authorities in any situation you saw

WIRELESS@SGX

The Wireless@SGx app allows you to:

- Allow your device to automatically connect to Wireless@SGx network
- Locate the Wireless@SGx spots on an interactive map
- Run diagnostics that can help improve the network
- Receive important updates

WEBSITES

COMMUNITY

People's Association (PA)
www.pa.gov.sg

Ministry of Culture, Community and Youth
www.mccy.gov.sg

Ministry of Social and Family Development
www.msf.gov.sg

Singapore Together
www.sg

EDUCATION

Ministry of Education (MOE)
www.moe.gov.sg

IMMIGRATION

Immigration & Checkpoints Authority (ICA)
www.ica.gov.sg

LABOUR

Ministry of Manpower (MOM)
www.mom.gov.sg

POSTAL

SingPost
www.singpost.com

PUBLIC HOUSING

Housing and Development Board (HDB)
www.hdb.gov.sg

Town Councils
www.towncouncils.sg

TAX

Inland Revenue Authority of Singapore (IRAS)
www.iras.gov.sg

TRANSPORT

Land Transport Authority (LTA)
www.lta.gov.sg

TransitLink
www.transitlink.com.sg



WELCOME TO OUR NEIGHBOURHOOD

NEIGHBOURHOOD POLICE CENTRE/POST

📍 Bukit Panjang North Neighbourhood Police Post

Address: 27 Marsiling Drive, #01-237, Marsiling Green, S730027
Tel: 1800 368 9999

📍 Choa Chu Kang Neighbourhood Police Centre

Address: 20 Choa Chu Kang Street 52, #01-02, S689286
Tel: 1800 765 9999

📍 Marsiling Neighbourhood Police Post (e-Kiosk)

Address: 16 Marsiling Lane, #01-183, S730016

📍 Woodlands East Neighbourhood Police Centre

Address: 3 Woodlands Drive 63, S737890
Tel: 1800 767 9999

📍 Woodlands Police Division Headquarters

Address: 1 Woodlands Street 12, S738622
Tel: 1800 466 0000

📍 Woodlands West Neighbourhood Police Centre

Address: 1 Woodlands Street 12, S738622
Tel: 1800 363 9999

SINGAPORE POST OFFICE

📍 Bukit Panjang Branch

Address: Track 10, 10 Choa Chu Kang Road, S689379

📍 Choa Chu Kang Central Branch

Address: 309 Choa Chu Kang Avenue 4, #01-03, Centre S680309

📍 Woodlands Central Branch

Address: 900 South Woodlands Drive, #03-05/06 Civic Centre, S730900

TOWN COUNCIL OFFICE

📍 Marsiling-Yew Tee Town Council

Address: 306A Woodlands Street 31, #02-00, S731306 (Main Office)
563 Choa Chu Kang Street 52, #01-198, S680563 (Branch)
Tel: 6430 7800

COMMUNITY LIBRARY

📍 Choa Chu Kang Public Library

Address: 21 Choa Chu Kang Avenue 4, #04-01/02, Lot 1 Shopper's Mall, S689812

📍 Woodlands Regional Library

Address: 900 South Woodlands Drive, #01-03, Woodlands Civic Centre, S730900

LET'S BE RESPONSIBLE



In Singapore, we keep our surroundings clean and green to ensure a high standard of hygiene and protect our environment. Together, let's ensure we pick up after ourselves and keep our surroundings clean!

POLYCLINIC

📍 Choa Chu Kang Polyclinic

Address: 2 Teck Whye Crescent, S688846

📍 Woodlands Polyclinic

Address: 10 Woodlands Street 31, S738579



WELCOME TO THE NEIGHBOURHOOD!

We hope that you will enjoy our neighbourhood as much as we do. Remember this is just the beginning, there's so much more that awaits you in our friendly neighbourhood!

Our community is always here for you. Reach out to us, we are just a phone call or email away!

Stay abreast of community
integration programmes:
facebook.com/pa.integration

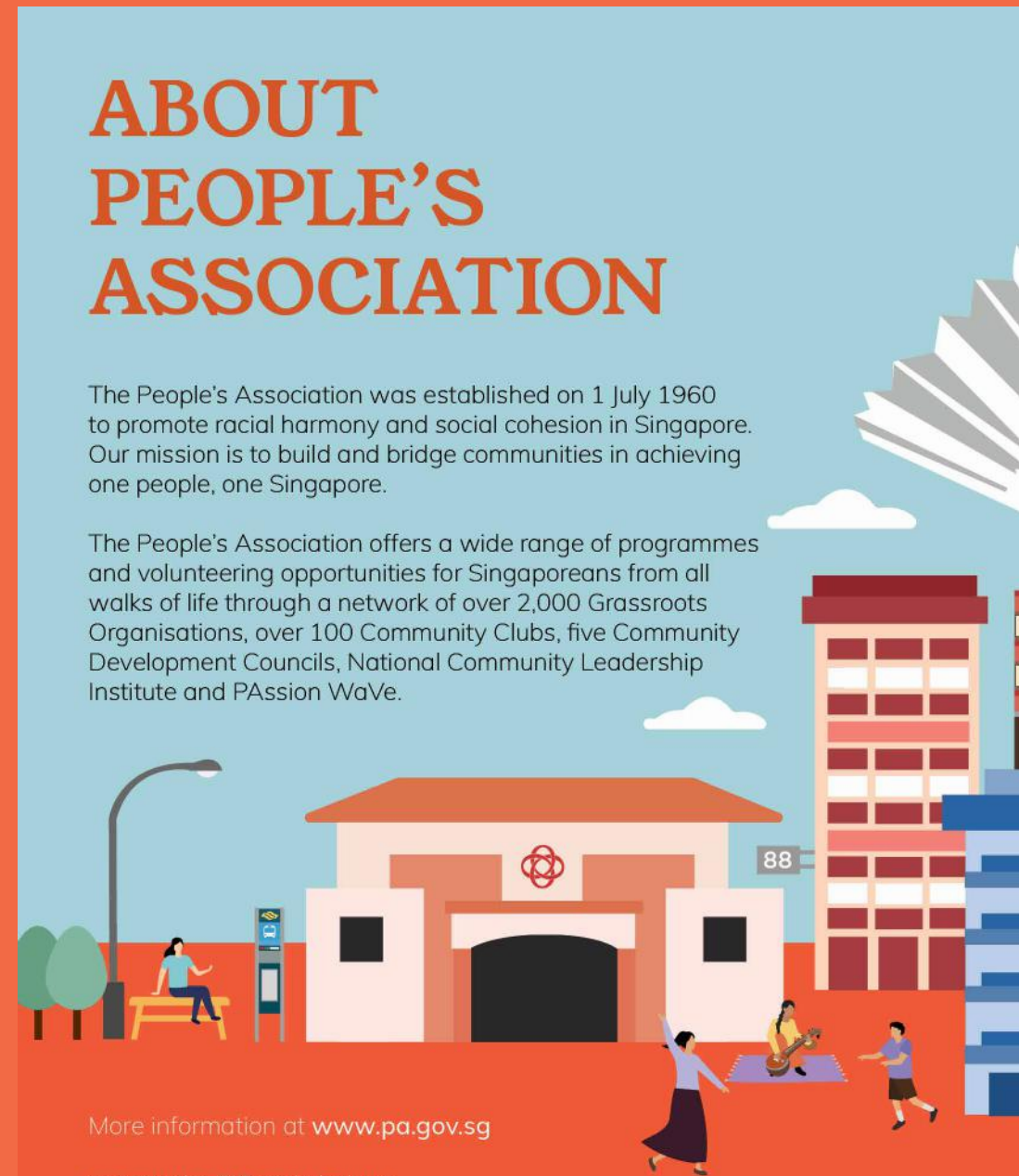
ABOUT PEOPLE'S ASSOCIATION

The People's Association was established on 1 July 1960 to promote racial harmony and social cohesion in Singapore. Our mission is to build and bridge communities in achieving one people, one Singapore.

The People's Association offers a wide range of programmes and volunteering opportunities for Singaporeans from all walks of life through a network of over 2,000 Grassroots Organisations, over 100 Community Clubs, five Community Development Councils, National Community Leadership Institute and PASSion WaVe.

More information at www.pa.gov.sg

or scan the QR code below:



IMPORTANT INFORMATION

EMERGENCY CONTACTS

Emergency Ambulance and Fire
995

Non-Emergency Ambulance
1777

Police Emergency
999

Police Emergency SMS (if not possible to call)
71999

Police Hotline (for crime-related information)
1800 255 0000

Fire Hazard Reporting (SCDF)
1800 280 0000

USEFUL CONTACTS

Essential Maintenance Service Unit (for common estate areas)
1800 275 5555

Building & Construction Authority (BCA; to report structural defects in condominiums and non-public housing buildings)
1800 342 5222

General Utilities
1800 778 8888 (SP Group)
1800 225 5782 (PUB)
1800 752 1800 (City Gas)

Community Mediation Centre (for neighbour disputes)
1800 225 5529

National Environment Agency
6225 5632

Public Utilities Board (PUB; to report floods/drain obstructions)
1800 225 5782

Land Transport Authority (for roads, crossings, bus services/stops)
1800 225 5582

National Parks Board
1800 471 7300

Animal & Veterinary Service
1800 476 1600

COMMUNITY CLUBS

LIMBANG

Limbang Constituency Office
Address: 20 Choa Chu Kang Street 52, #05-10, S689286
Tel: 6765 8611



Facebook

MARSILING

Marsiling Community Club
Address: 100 Admiralty Road, S739980
Tel: 6269 6768



Facebook

WOODGROVE

Fuchun Community Club
Address: 1 Woodlands Street 31, S738581
Tel: 6365 6911



Facebook

Woodgrove Community Centre
Address: 353 Woodlands Avenue 1, #01-753, S730353
Tel: 6366 9010

YEW TEE

Yew Tee Community Club
Address: 20 Choa Chu Kang Street 52, #01-01, S689286
Tel: 6769 3672



Facebook

