



YOUR Neighbourly WELCOME GUIDE

LET'S EXPLORE
West Coast GRC
Pioneer SMC



Singapore Together is about the Government working with Singaporeans, and Singaporeans working with one another, to build our future Singapore. The Government will open up more partnership opportunities for Singaporeans to participate. The Government also hopes to support more citizen-led efforts. Whatever our background or interests, we can each step forward to contribute in areas that we care about. By working together, we can turn diversity into strength and transform challenges into opportunities, to build a Singapore that present and future generations of Singaporeans will be proud of.



No part of this guidebook may be reproduced without the written permission of People's Association. All rights reserved.

Photo Disclaimer:
Several photographs in this book were taken during the pre-COVID-19 period.

Copyright © 2022 by People's Association.
All information is correct at time of publication (November 2022).

SPECIAL THANKS

National Parks Board

My Neighbourhood, My Home!

Singapore is a multi-racial society that celebrates the diversity and vibrancy of different cultures, ethnicities and religions. What better way to discover the gastronomical cuisines, heritage and architectural landmarks and recreational activities than to start with a leisurely stroll around your neighbourhood. An initiative of the People's Association, "Your Neighbourly Welcome Guide" contains colourful anecdotes and well-kept secrets from residents and volunteers. These unique stories of places, activities and experiences are happening right in your neighbourhood.

Discover West Coast GRC and Pioneer SMC, and other neighbourhoods through the e-guides here:
www.pa.gov.sg/our-programmes/community-integration



Welcome to Our Neighbourhood!

P07 Food Hunt

- Delectable food options at Boon Lay Place Food Village
- A Heritage Food Award Hawker Centre
- Healthy meals for any occasions at West Coast Market Square and more!

P13 Discover Sights

- Tranquil waters of Pandan Reservoir
- The picturesque lighthouse at the end of the island
- Berths, yachts and more!

P17 Fun In The Sun

- Waterfalls and Wetland
- The Gardening Resource Hub
- Natural and Cultural History and more!

P27 Be A Part Of The Community

- Food From the Heart Initiative at The Community Shop
- Rescue short-shelf-life products with Pioneer Food Rescue's Volunteers
- Enrichment Programmes with Virtual Mentorship and more!

P09 Tracing Our Roots

- Rich Chinese heritage of a temple
- Discover a wide range of natural history collections at a museum
- World War II history at Reflections at Bukit Chandu and more!

P15 Exploring Art

- Singapore's oldest dragon kiln
- Uncover eclectic Chinese Mythology
- Admire the Art of Southeast Asia and more!

P25 Connect With Your Community

- Street Celebrations at the National Day Street Party!
- The Annual Music Concert, West Coast Rocks!

P29 People Of The Neighbourhood

- The Community Integration Champion
- The Community Organiser
- The Go-To Resource Person



MORE ABOUT SINGAPORE

Clementi Woods Park



FOOD PARADISE

Ask almost anyone, and they will tell you eating is one of our favourite things to do! Our multicultural identity has opened us to the wide variety of cuisines and culinary trends. A definite treat for your taste buds, experience the richness of our different spices, coconut and pandan as you chew into our flavourful local delights which you can find around the corner.



FESTIVALS & CULTURES

As a vibrant cityscape with many cultures, Singapore has many festivals and events for everyone to join. People from all different racial and cultural backgrounds can enjoy exciting festivals like the Chingay festival, Thaipusam, Deepavali, Hari Raya Puasa and Mid-Autumn festival.



THE OLD & THE NEW

Old shophouses amidst shiny new skyscrapers. In Singapore, one way we keep our history alive is through active conservation. A lot of the old houses, shophouses and places of significance have been preserved to remind us of our roots. Some of these places are where early immigrants lived or worked. While exploring our neighbourhoods, you will find charming old-school places woven into our cosmopolitan lifestyle and given new lives as eateries, shops, or other indulgences.

Experience a slice of Singapore right in your neighbourhood! Discover an eclectic mix of food, heritage, shopping, culture and more right at your doorstep and mingle with people in your neighbourhood through fun-filled workshops and events.



Explore West Coast GRC & Pioneer SMC

Welcome to our neighbourhood! Though a well populated neighbourhood today, West Coast used to be a Malay kampung and fishing village, known for its prawn farms and wooden attap houses that stood on stilts. Over the years it has transformed into a hub for industries alongside residential areas. On this side of the country, you will find parks littered across the estate, and sites interwoven with cultural heritage. Take a deep dive into the treasure troves of West Coast GRC and Pioneer SMC!

THE RESIDENTIAL ESTATE

 Pioneer SMC

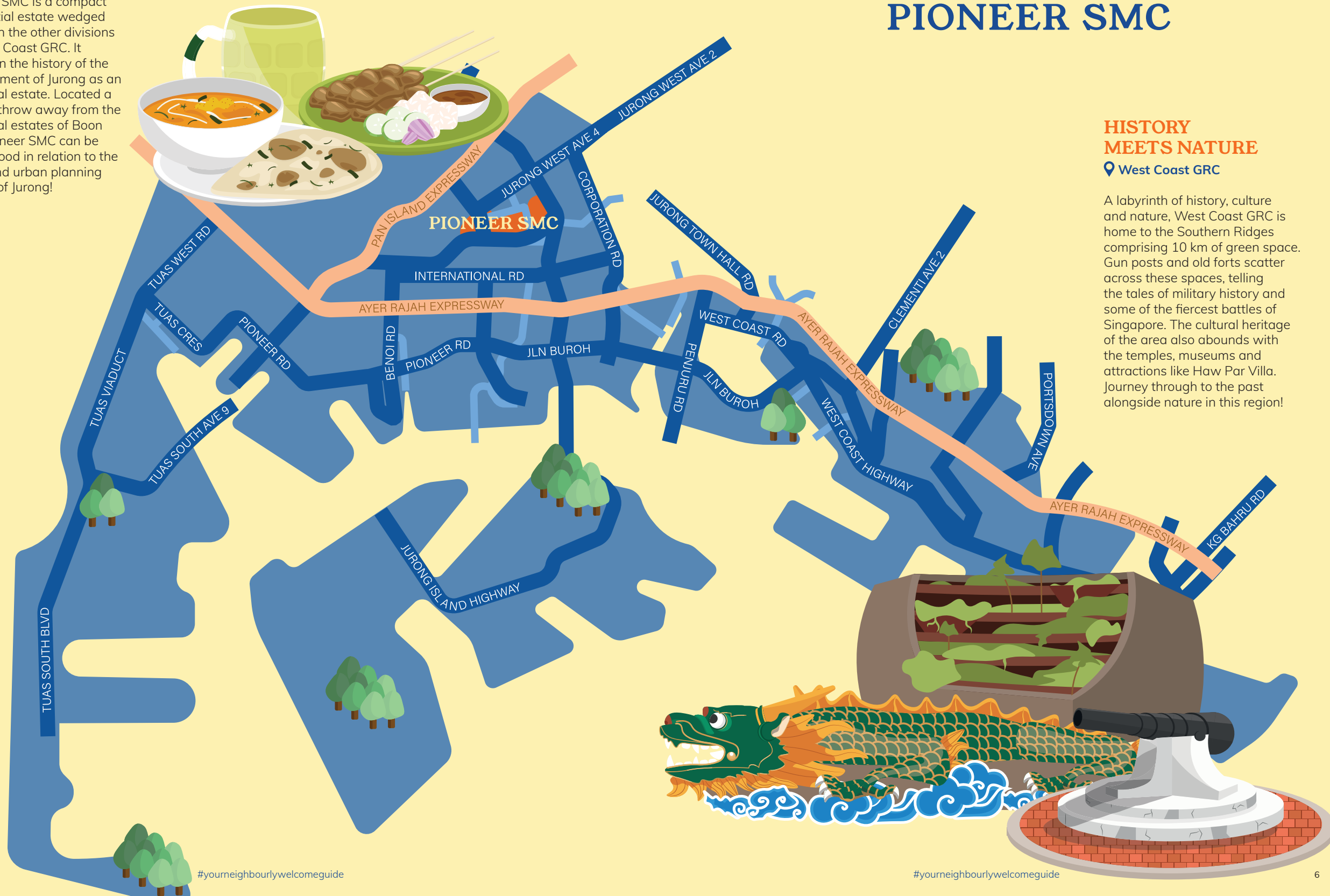
Pioneer SMC is a compact residential estate wedged between the other divisions of West Coast GRC. It shares in the history of the development of Jurong as an industrial estate. Located a stone's throw away from the industrial estates of Boon Lay, Pioneer SMC can be understood in relation to the town and urban planning history of Jurong!

INTRODUCING WEST COAST GRC PIONEER SMC

HISTORY MEETS NATURE

 West Coast GRC

A labyrinth of history, culture and nature, West Coast GRC is home to the Southern Ridges comprising 10 km of green space. Gun posts and old forts scatter across these spaces, telling the tales of military history and some of the fiercest battles of Singapore. The cultural heritage of the area also abounds with the temples, museums and attractions like Haw Par Villa. Journey through to the past alongside nature in this region!



FOOD HUNT



From savoury dishes to sweet snacks or desserts, a plethora of food options awaits the adventurous foodie. Explore a variety of local eats right in your neighbourhood today!



1 **TEBAN MARKET AND FOOD CENTRE**

📍 37A Teban Gardens Road

Located near Pandan Reservoir is a hawker centre comprising cooked food stalls and 52 market stalls. After a stroll or workout at Pandan Reservoir, cure your hunger pangs with a wide range of local food ranging from Malay, Chinese to Western cuisines. Be sure to try the Wanton Noodles and Chicken Rice!



2 **BOON LAY PLACE FOOD VILLAGE**

📍 221A Boon Lay Place

Whether you're craving for soup, porridge, fried or grilled food, noodles or rice, this hawker centre promises a dizzying array of food options. Some of the crowd favourites include Nasi Lemak, Fried Kway Teow, Ngoh Hiang, Fishball Noodles, and Thunder Tea Rice. Bring your empty stomach and get ready for a treat!



3 **TELOK BLANGAH DRIVE FOOD CENTRE**

📍 79 Telok Blangah Drive

Nestled within the neighbourhood, Telok Blangah Drive Food Centre is a haven for famous local dishes like Fried Carrot Cake, Wanton Noodles, Nasi Briyani and Nasi Lemak. It is your one-stop destination for local delicacies!



4 **JUMBO COFFEESHOP**

📍 19A Dover Crescent

This long-established coffee shop is famous for Chicken Rice, Char Siew Rice, XO Fish Head Bee Hoon and Sliced Fish Hor Fun. Make sure you head there early as there might be a flurry of people during peak hours!



5 **AYER RAJAH FOOD CENTRE**

📍 503 West Coast Drive

One of the first few hawker centres in Singapore to have received Singapore Top Heritage Food Award for serving delicious meals, Ayer Rajah Food Centre is a standalone food centre with 80 food stalls, housing some of the best local delights like Prata, Nasi Briyani, BBQ Stingray, Rojak, Kambing Soup, to Mee Goreng.



6 **WEST COAST MARKET SQUARE**

📍 726 Clementi West Street 2

Located in Clementi West, West Coast Market Square is home to 60 stalls and a vibrant and lively hub for West Coast residents! Whether you need a bowl of Sliced Fish Soup or porridge when you're feeling under the weather, or up for hearty Hainanese Curry Rice, this hawker centre has what you need.

KEEP OUR TABLES CLEAN

In Singapore, it's mandatory for diners to return their trays and clear their tables in hawker centres, coffeeshops and food courts. Let's keep our public dining places clean together!



TRACING OUR ROOTS

Our neighbourhoods are rich with heritage and history. Take a walk down the streets and you will find historical places and conserved architecture, each with a story to tell.



LET'S BE CONSIDERATE



When visiting various heritage sites, refrain from making too much noise out of respect. Together, let's create a pleasant experience of our cultural heritage!

1 HASANAH MOSQUE

📍 492 Teban Gardens Road

In 1971, Hasanah Mosque was built by Jurong Town Corporation at the present location in place of several mosques and surau. Today, the mosque serves the diverse community of Teban Gardens and Pandan Gardens and strives to instil positive values in society.

2 ANG CHEE SIA ONG TEMPLE

📍 131 West Coast Drive

The story began with Mr Wang Dong Qing's purchase of "Joss Ash" of Lord Green Dragon in Guangdong. Before a proper temple was built, it was initially worshipped at Mr Wang's home. Today, this temple, which was constructed in ancient Chinese style, houses other deities besides Lord Green Dragon.

3 SRI RUTHRA KALIAMMAN TEMPLE

📍 100 Depot Road

The temple started out as a small shrine at the Alexandra Brickworks compound where the Port of Singapore Authority (PSA) is today. The shrine grew into a simple brick building and eventually into its existing building today. Its operations have been sustained by Hindu devotees and bear testament to the Hindu community's devotion and self-organisation.



4

SINGAPORE DISCOVERY CENTRE

510 Upper Jurong Road

Singapore Discovery Centre features exhibitions that tell the history of early to present-day Singapore from the perspective of defence and security. Through its multi-sensory experiences, visitors are invited to think about, prepare and imagine the future of Singapore.



5

FORT SILOSO

Siloso Road

Fort Siloso is located on Sentosa Island and is the sole restored coastal gun battery among the 12 batteries making up "Fortress Singapore" at the start of World War II. The fort is now a military museum containing the remains of fortified military structures of the past.



6

LABRADOR NATURE RESERVE

Labrador Villa Road

Labrador Nature Reserve belongs to the Southern Ridges. Besides offering a vantage point and a home to wildlife like the Oriental Magpie-robin and Black-naped Oriole, it is also where Labrador Battery is located.



*Image courtesy of National Parks Board

7

LEE KONG CHIAN NATURAL HISTORY MUSEUM

2 Conservatory Drive

Tucked away in the campus of the National University of Singapore is the Lee Kong Chian Natural History Museum. With over 2000 specimens on display, this is the place to learn about Southeast Asia's biodiversity through the ages!



8

REFLECTIONS AT BUKIT CHANDU

31-K Pepys Road

Housed in a colonial black and white bungalow is a heritage centre recounting the Battle of Pasir Panjang, one of the fiercest battles fought in World War II. The centre invites you to contemplate the acts of heroism by the soldiers of the Malay Regiment.



9

PASIR PANJANG PILLBOX

Pasir Panjang Road

Concrete pillboxes were built by the British along the southern coastline as part of the island defence system. Today, it serves as a memory of Singapore's colonial and military past.



DISCOVER SIGHTS



Our neighbourhoods are rich with heritage and history. Take a walk down the streets and you will find traditional businesses and conserved architecture, each with a story to tell.

1



CLEAN & BEAUTIFUL

While going on walks, let's ensure we keep our surroundings clean to preserve the beauty of our outdoor spaces! Remember to discard your litter properly!



1

PANDAN RESERVOIR

📍 Along West Coast Road

Pandan Reservoir is surrounded by Pandan Loop and Jurong Industrial Park. Visitors can look forward to experiencing the picturesque and tranquil waters of the reservoir. It is a lovely spot for a brisk walk with families and friends or to take in the fresh air on your morning run.

2

RAFFLES MARINA LIGHTHOUSE

📍 10 Tuas West Drive

Located at the end of the pier, the beacon is a popular backdrop for wedding photography. It was built in 1994 and currently overlooks the Tuas Second Link. Take a leisurely stroll along the pier and catch the sunset to cap off your evening!

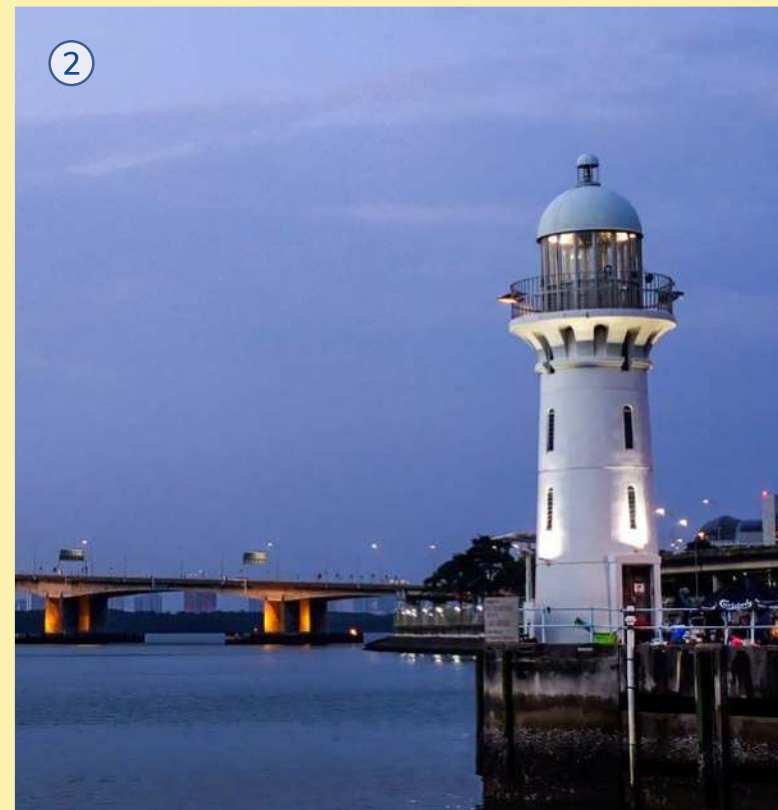
3

KEPPEL ISLAND

📍 Keppel Bay Vista

Keppel Island is an island located in the northern part of Keppel Bay, between Singapore's main island and the island of Sentosa. Besides berths for yachts, Keppel Island is brimming with restaurants perfect for date nights that can be followed by a leisurely jaunt to the break water area.

2



3



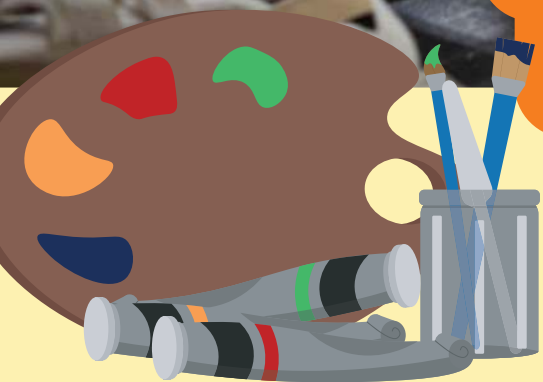
EXPLORING ART

Explore our lively streets! From colourful wall art to significant culture-related art activities, catch a glimpse of our vibrant artistic landmarks and murals as you stroll through our neighbourhood.



APPRECIATING CREATIVITY

When visiting art exhibitions or viewing murals, be mindful as to not touch the artwork unless advised. Artists spend much time and effort in coming up with beautiful pieces for our viewing pleasure. Let's be considerate and respect the dedication it takes to create an art piece.



1 THOW KWANG POTTERY JUNGLE

📍 85 Lorong Tawas

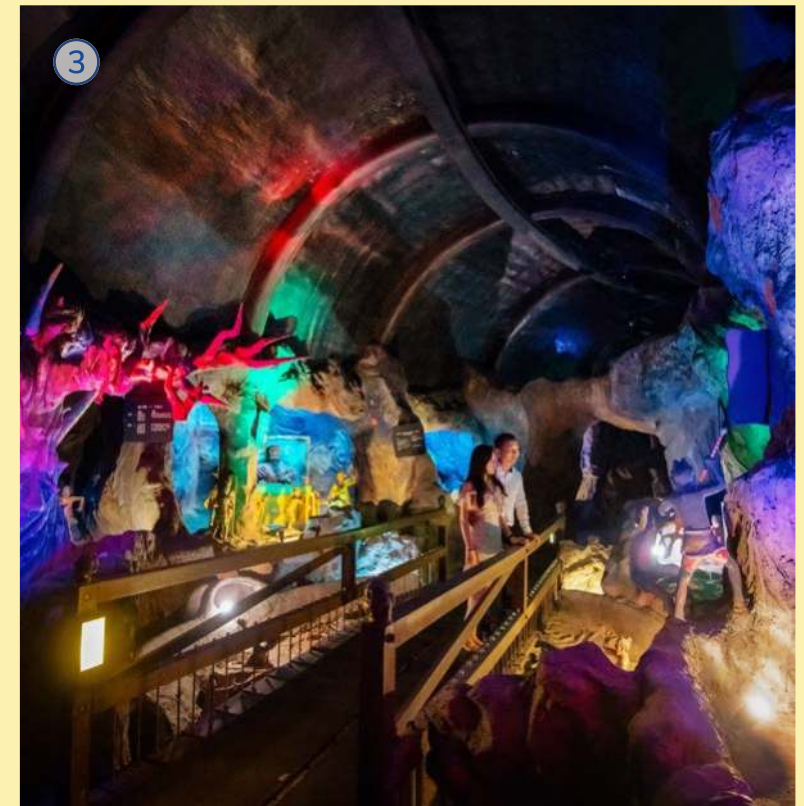
Hidden in the western part of Singapore is Singapore's oldest, surviving dragon kiln, a cultural treasure that was established in 1965 by Tan Kim Seh. This little pottery paradise not only supplies a wide variety of pottery wares but also workshops for pottery enthusiasts!



2 BOON LAY MURAL

📍 207 Boon Lay Place

Tucked away at Block 207 is a wall mural launched in celebration of the nation's Bicentennial in 2019. The mural symbolises the harmony of diverse cultures, unique hideouts and renowned delicacies housed in the neighbourhood of Boon Lay.



3 HAW PAR VILLA

📍 262 Pasir Panjang Road

Haw Par Villa is a theme park of yesteryear built by Aw Boon Haw, the entrepreneur behind Tiger Balm. The park is a treasure trove of Chinese mythology, folklore, legends, history and illustrations of various aspects of Confucianism.

4 NUS MUSEUM

📍 50 Kent Ridge Crescent

Located in National University of Singapore, NUS Museum is not only a space for exhibition and learning but also explorations of curatorial methods in Asia. It offers all year round programmes, such as panel discussions, workshops and film screenings - perfect for art enthusiasts!



FUN IN THE SUN

If you prefer to be out and about, working out in green spaces or just taking leisurely walks, add these outdoor neighbourhood spaces to your list for your next day out in the sun.

1



FOOTPATH COURTESY



Remember that we share a common footpath. If you are a cyclist, please give way to pedestrians and ring your bell politely in advance to alert them if needed.

1

JURONG CENTRAL PARK

📍 Junction off Jalan Boon Lay & Boon Lay Way

An exciting park located opposite Boon Lay MRT, Jurong Central Park has life-sized board-game features like the Snakes and Ladders playground and Ludo Garden. Relive your childhood memories with its unique game play facilities!

2

YUNNAN GARDEN

📍 Nanyang Technological University

A sprawling open space of greenery, waterscapes and heritage landmarks, Yunnan Garden is located in Nanyang Technological University. Set against the backdrop of the Chinese Heritage Centre, it serves as an educational and recreational hub for the university community as well as the residents of the wider Jurong neighbourhood.

3

JURONG WEST NEIGHBOURHOOD PARK

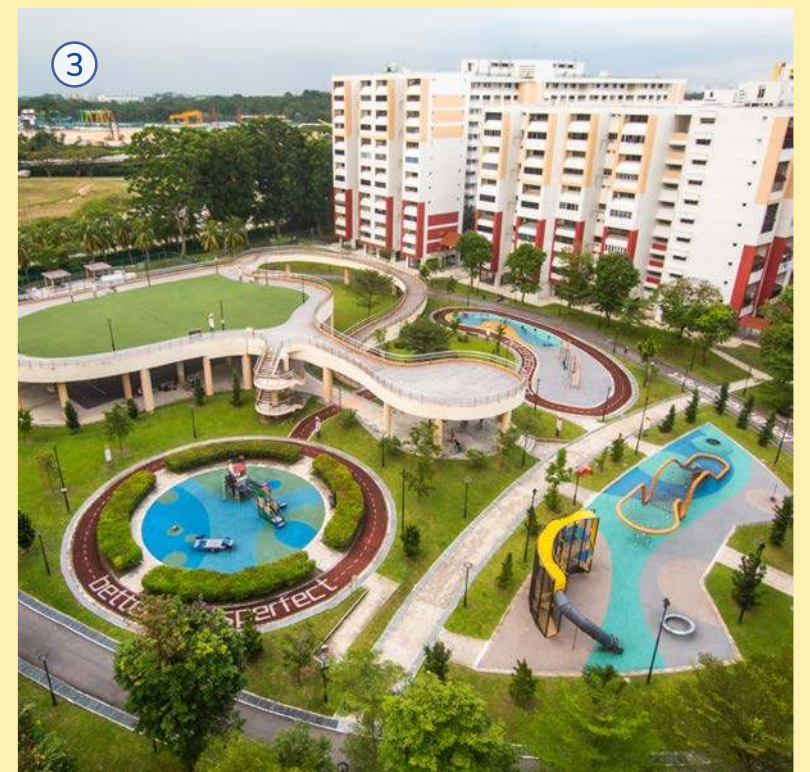
📍 548, 549, 556 & 558 Jurong West Street 42

This neighbourhood park offers a spectrum of facilities such as basketball court, street soccer court, fitness corners and playground for the residents. While you're there, you might chance upon the Qigong activities and Fun Walks organised by the Residents' Network!

2



3





4

HORTPARK

📍 33 Hyderabad Road

HortPark is a unique park that is also a gardening resource hub. Besides gardening workshops, the park is a great spot for family outings with its themed gardens and nature playground. Those with green fingers, keep a lookout for their signature event, Gardeners' Day Out!



4b

5

ONE-NORTH PARK

📍 Along North Buona Vista Road and Central Exchange Green

This 16-hectare park has something for everyone. Each section of this park offers something unique—the playground in Biopolis, the Forest Canopy Boardwalk for bird watching in Fusionpolis South and open spaces for picnics and frisbee games in Metropolis. Visitors can also enjoy nature along the Butterfly Observation Walk which features various species of butterflies and nectar plants.

6

PASIR PANJANG PARK

📍 121 Pasir Panjang Road

The new Pasir Panjang Park will stretch from West Coast Park to Labrador Reserve, and will be part of the Great Southern Waterfront. Nature lovers will be excited to explore the park, which will highlight aspects of natural and cultural history of the area.

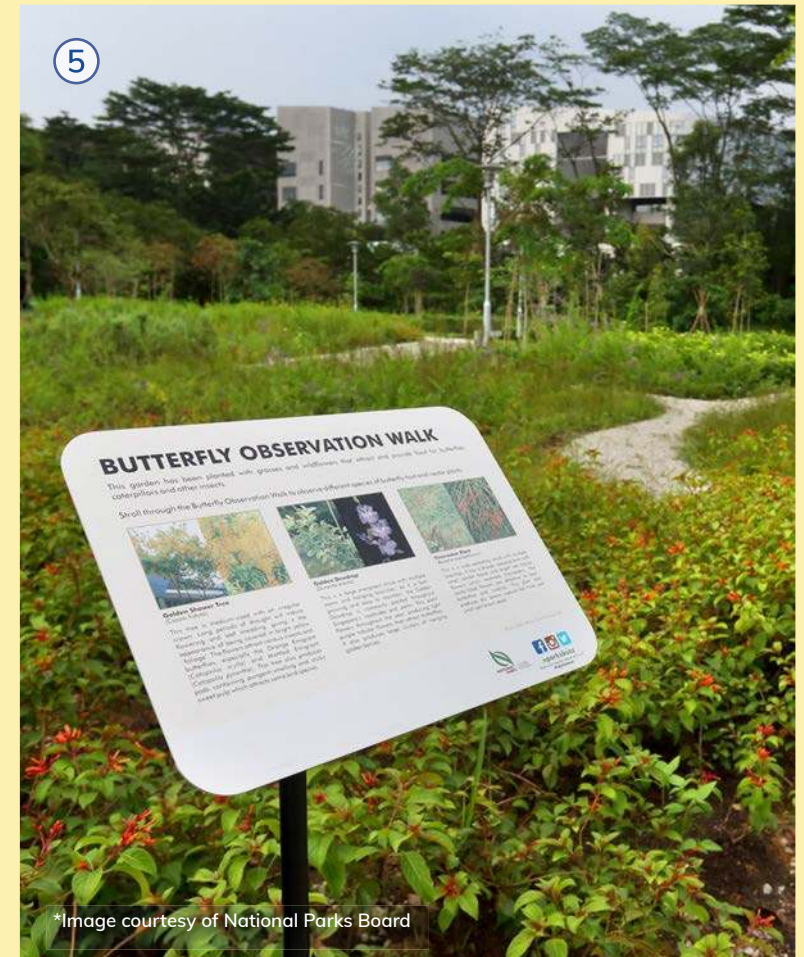
7

CLEMENTI WOODS PARK

📍 Along West Coast Road next to West Coast Plaza

This community park is ideal for a morning or evening leisurely jaunt. Retreat into nature and find respite in the park's tall mature trees and natural vegetation!

5



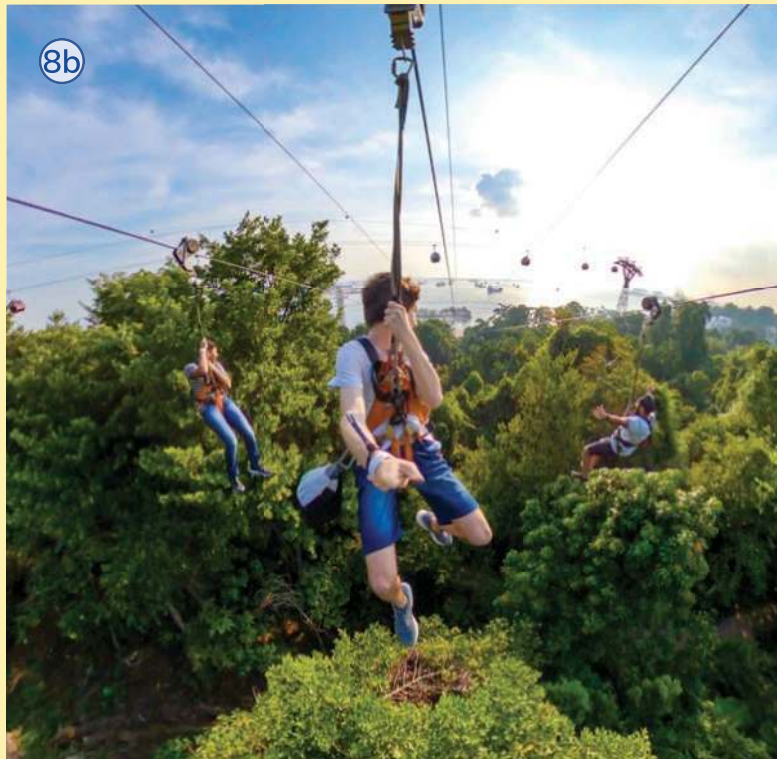
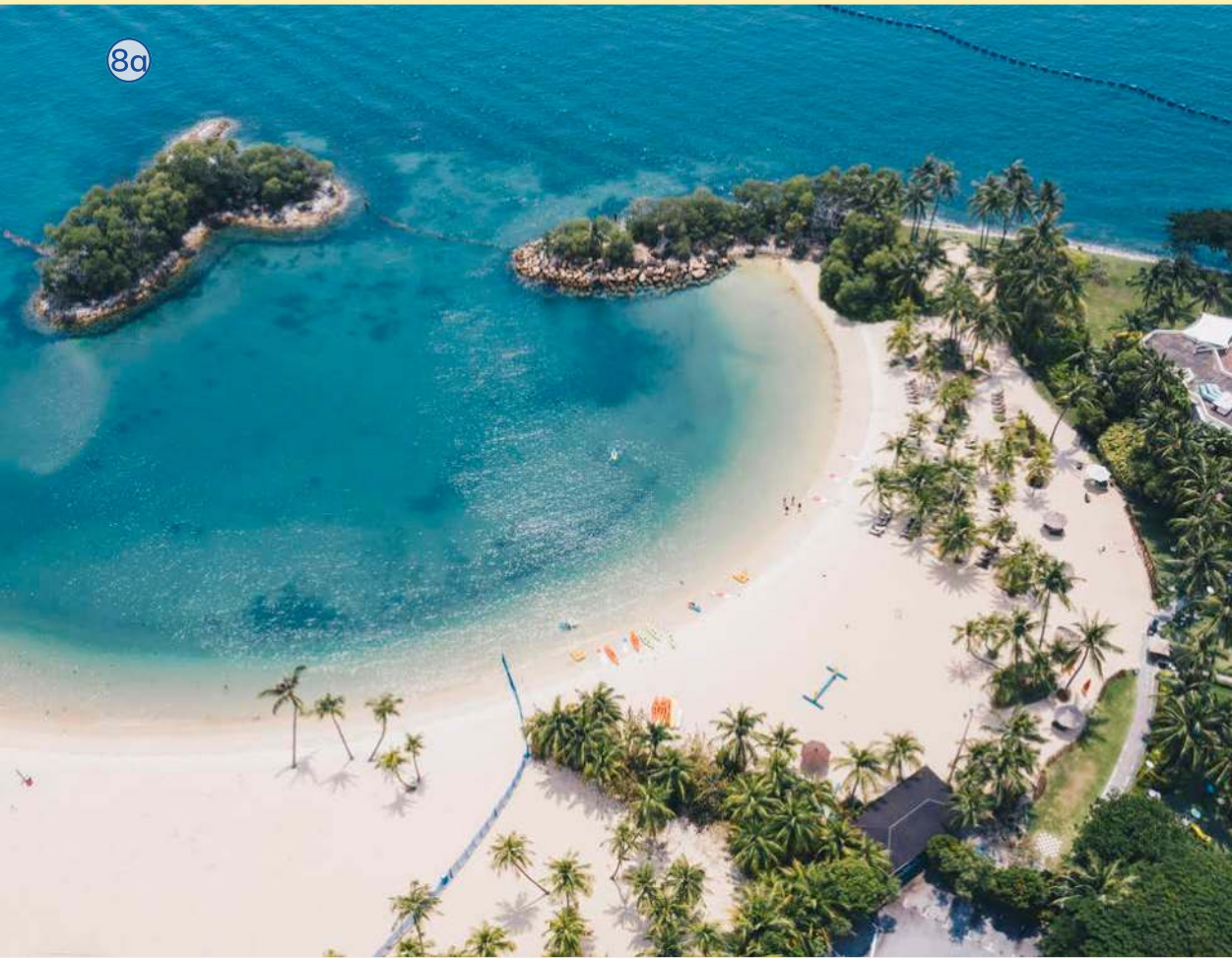
*Image courtesy of National Parks Board

6



7





8

SENTOSA

📍 Enter via Sentosa Gateway

Sentosa is a perfect island getaway offering a whole range of attractions such as Universal Studios Singapore, Adventure Cove, Siloso beach and Palawan beach.

9

WEST COAST PARK

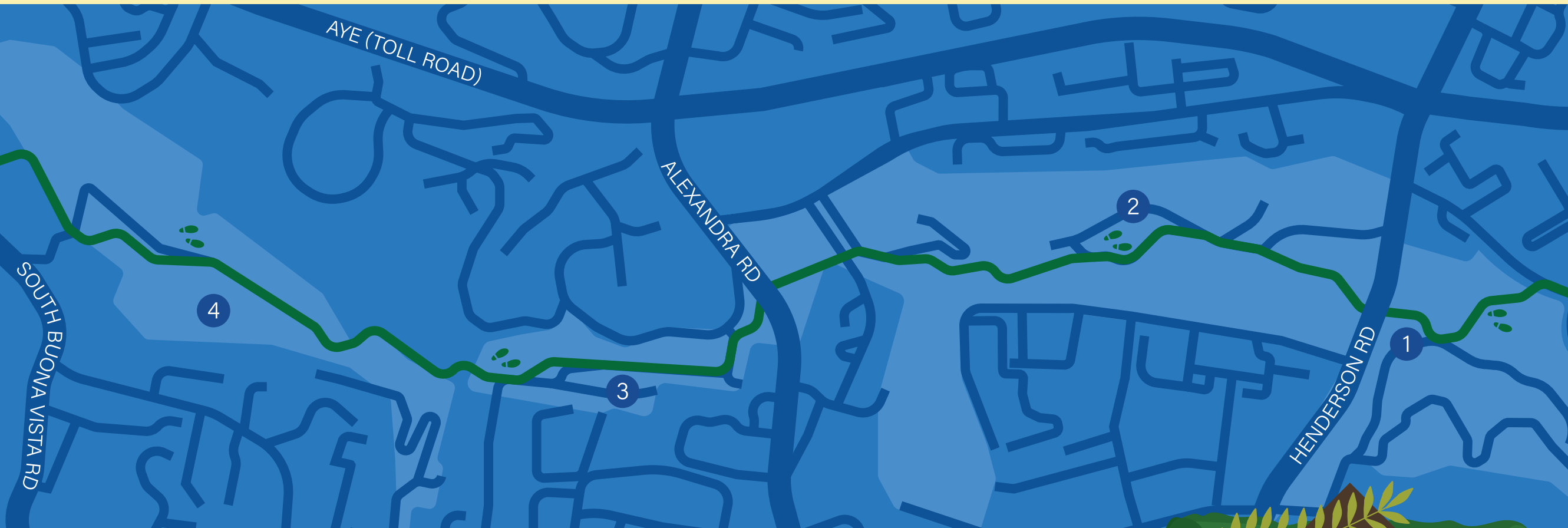
📍 West Coast Ferry Road

West Coast Park is a hub for play catering to visitors of all ages. Besides the obstacle courses of the Adventure Playground, there are barbecue pits, campsites, and a Marsh Garden within the compound.



A LEISURELY STROLL

Follow this route to discover some interesting outdoor places in our neighbourhood!



1 HENDERSON WAVE

Henderson Wave is the highest pedestrian bridge in Singapore as it stands 36m above the ground. The wave-shaped bridge connects Mount Faber Park to Telok Blangah Hill Park.



2 SOUTHERN RIDGES

The Southern Ridges comprise 10km of trails and is an excellent destination for nature lovers, history enthusiasts, bird watchers and families planning a unique outing!



3 HORTPARK

HortPark is a 9-hectare park that is also known for being a hub for gardening resources. It serves as a park connector for Kent Ridge Park, Telok Blangah Hill Park and Mount Faber Park.



4 KENT RIDGE PARK

The 47-hectare park is not only a sanctuary for bird watchers and eco-tourists, but also a historical park that will satisfy the curiosity of history buffs.

Look out for the Park Connector Network (PCN)!

This path continues into other neighbourhoods through an island-wide greenery network known as the Park Connector Network. Look out for the PCN signages and maps as you navigate your way along the roads, scenic rivers and canals that link you to the major parks. Hop on a bicycle or simply jog along the park connectors!



CONNECT WITH YOUR COMMUNITY



Immerse in the culture and buzz of your neighbourhood. Take the first step to say hello to your friendly neighbours and you might even gain a few buddies along the way.

NATIONAL DAY STREET PARTY

 Ayer Rajah

How often do you get to close off an entire road to house an amazing number of amusement rides and street shows? This event happens yearly during National Day where the street would be transformed into a carnival space with activities for all ages, including performances, carnival rides and fireworks displays.

During pre-Covid times, more than 5,000 Ayer Rajah residents and friends would gather to celebrate Singapore's Birthday. It is an event not to be missed!



#yourneighbourlywelcomeguide



WEST COAST ROCKS!

 Clementi Stadium

West Coast Rocks! is one of the most exciting events in West Coast GRC. It is an annual rock concert held in the open, featuring local music of various genres, ranging from Mandopop to indie music. Picture a massive stage in an open field peppered with residents of all ages. Held amidst the season of National Day celebrations, residents gather to share their love for the nation, regardless of race, language or religion.

BE A PART OF THE COMMUNITY

Connect with your community as you get to know people from all walks of life. Make like-minded friends and pick up new skills through fun-filled activities. A neighbourhood is not just about the places, it is also about the people.

WECARE FOOD CONNECT VOUCHER SCHEME



The scheme helps low-income families with basic necessities and household groceries by giving a monthly \$50 voucher every 2nd Saturday of the month.

Visit Ayer Rajah CC / Gek Poh Ville CC for more information.

FOOD FROM THE HEART INITIATIVE



The Community Shop by Food from the Heart Initiative is a mini mart operating on a shop-for-free concept where beneficiaries select a predefined number of food items from the racks.

Visit Our Boon Lay Facebook Group or join the Telegram Group at <https://t.me/oneboonlay> for more information.

NANYANG SAYANG



Nanyang Student Assistance Scheme (or Nanyang Sayang) provides free tuition, mentorship opportunities and holistic learning activities for children and youth to motivate them in their studies, develop their character and uplift their potential.

Visit Nanyang CC for more information.

PIONEER FOOD RESCUE



Join Pioneer Food Rescue's volunteers to save short-shelf-life products contributed by wholesale markets. Residents can collect these free items during distribution day once a month.

Visit The Frontier CC for more information.

THE MENTORING CLUB @ TELOK BLANGAH



Developed for residents between 11 and 17 years old, this one-year mentoring programme aims to give children exposure to nature, music, arts, sports and business.

Visit Telok Blangah CC for more information.

WEST COAST VIRTUAL MENTORSHIP

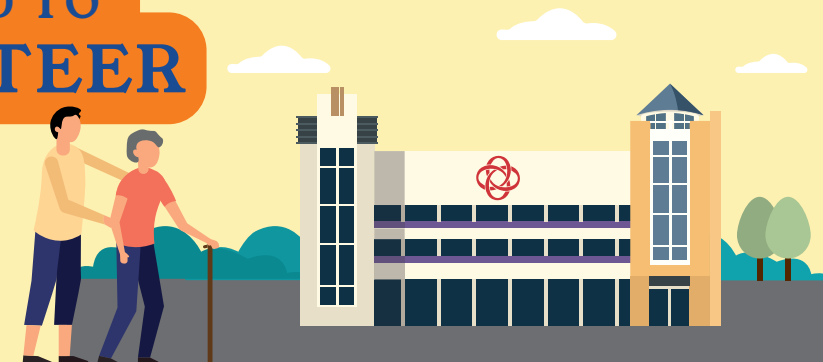


The programme is open to all primary and secondary students living in the West Coast where the mentors will provide enrichment workshops and academic guidance.

Visit West Coast CC for more information.

STEP FORWARD TO VOLUNTEER

Keep a lookout for volunteering opportunities in your neighbourhood today! Join an initiative and lend a helping hand. Together, we can make our neighbourhood a better place for everyone!



PEOPLE OF THE NEIGHBOURHOOD

Get to know your neighbours through their tales and experience the neighbourhood through their eyes. As you explore the neighbourhood and participate in community activities, you may just bump into one of them. When you do, don't be shy, say hi!

MEET
Mr Prakash
Kumar Hetamsaria, PBM
THE COMMUNITY INTEGRATION CHAMPION

Mr Prakash is the chairman of West Coast Community Sports Club (CSC) and Integration and Naturalisation Champion (INC). He believes in active engagement with residents and new citizens. He has led numerous projects and organised events to foster racial harmony and social cohesion, such as the Committee Sharing Session and Citizenship Ceremony to bring new citizens and permanent residents together to bond and build connections. Apart from that, he has also organised the West Coast Earth Hour, a project that educates the residents on sustainable practices and spreads awareness on environmental issues.



MEET
Ms Nynn Guo Jie Ning
THE AVID VOLUNTEER

Nynn started volunteering and helping out with events organised by Gek Poh South Residents' Network and Gek Poh Ville CC at the age of 15. She is an enthusiastic youth who loves helping out at community events and making friends during her free time. She has helped out at Bursary events and baking demonstration workshops, participated in national initiatives like mask and hand sanitiser distributions, and volunteered as a Seniors Digital Coach for seniors who have difficulty using smartphones.



MEET
Mr Salim Bin Ali, PBM
THE VETERAN GRASSROOTS LEADER

Mr Salim, or commonly known as Uncle Salim by residents, is a friendly figure in the Pioneer neighbourhood. Serving as a Grassroots Leader for 19 years, he is ever passionate towards community work, walking the neighbourhood everyday to make sure that the living environment is kept in good condition for residents. He is always available for any neighbour who needs help for neighbour disputes or social assistance.



MEET
Ms Grace Lee Tsiu Wuk, PBM
 THE COMMUNITY ORGANISER

Ms Grace Lee Tsiu Wuk, PBM, has held numerous portfolios in the Boon Lay Constituency. She serves as the Chairperson of Boon Lay Integration and Naturalisation Champion (INC), Chairperson of Summerdale Neighbourhood Committee and Assistant Secretary of Boon Lay Citizens' Consultative Committee. Events led by Grace are extremely well received, including Boon Lay Countdown 2017, National Day Celebration, Blood Donation Drive and Citizenship Ceremony. She also plays an active role in the Food from the Heart initiative which creates opportunities for the community to look out for one another.



MEET
Mr Neo Swee Eng, BBM
 THE GO-TO RESOURCE PERSON

Mr Neo Swee Eng, BBM, Chairman of Nanyang Zone 1 RC started volunteering as he wanted to play an active role in his community. For more than 20 years, he is the go-to person regarding the happenings in the neighbourhood. He is often walking the ground to get to know residents and understanding issues that he can render support for. Apart from that, he also actively promotes a healthy lifestyle by organising exercise sessions for residents from all walks of life.



MEET
Mr A R Dinesh
 THE COMPASSIONATE CHAIRMAN

Mr A R Dinesh is the Chairman of Telok Blangah 'Blangah Square' Residents' Committee (RC). Despite his young age, Mr Dinesh has amassed years of experience in helping out in the community and is always on the lookout for fellow residents in need of assistance. He has also helped out in various Divisional initiatives such as grocery distribution to rental blocks in the neighbourhood. Coincidentally, Mr Dinesh also runs a grocery shop with his father along Pasir Panjang Road, where he has assisted in relaying Government initiatives to Pasir Panjang residents.



DIGITAL SERVICES

Stay updated on Singapore's digital services with these mobile applications and websites.



MOBILE APPS

EAPPT@ICA

This ICA mobile app allows you to:

- Book an appointment with ICA to complete your application processes
- View existing appointments at the appointments tab
- Locate SingPost outlets for collection of ICA certificates

MYENV

This weather and environment app:

- Provides you with location-based weather information
- Allows you to call NEA
- Make a report to NEA attaching photos and videos

MYTRANSPORT.SG

This transport mobile app allows you to:

- Access your frequently used bus information and traffic services
- Manage push notifications to receive MRT or road alerts
- Plan your trip with different transport options

NLB MOBILE

The library service allows you to:

- Set up multiple user profiles and borrow library materials (e-books)
- Pay fees online
- View loan and reservation items
- View events happening at libraries

ONESERVICE

This government app allows you to report the following issues in your neighbourhood:

- Cleanliness issues
- Maintenance of roads and footpaths
- Water supply and drains issues
- Pest related issues
- Horticultural issues
- Animal related issues

PARKING.SG

This parking app allows you to:

- Calculate parking fees
- Pay for parking online
- Make changes to your parking sessions

PAYNOW

This banking app allows you to:

- Transfer money instantly and with ease just by using phone number or NRIC

SGSECURE

This SGSecure app allows you to:

- Receive broadcast messages during an emergency
- Locate the nearest AED in your vicinity
- Send information and files to authorities in an emergency situation

WIRELESS@SGX

The Wireless@SGx app allows you to:

- Automatically connect your device to Wireless@SGx network
- Locate the Wireless@SGx spots on an interactive map
- Run diagnostics that can help improve the network
- Receive important updates

WEBSITES

COMMUNITY

People's Association (PA)
www.pa.gov.sg

Ministry of Culture, Community and Youth
www.mccy.gov.sg

Ministry of Social and Family Development
www.msf.gov.sg

Singapore Together
www.sg

EDUCATION

Ministry of Education (MOE)
www.moe.gov.sg

IMMIGRATION

Immigration & Checkpoints Authority (ICA)
www.ica.gov.sg

LABOUR

Ministry of Manpower (MOM)
www.mom.gov.sg

POSTAL

SingPost
www.singpost.com

PUBLIC HOUSING

Housing and Development Board (HDB)
www.hdb.gov.sg

Town Councils
www.towncouncils.sg

TAX

Inland Revenue Authority of Singapore (IRAS)
www.iras.gov.sg

TRANSPORT

Land Transport Authority (LTA)
www.lta.gov.sg

TransitLink
www.transitlink.com.sg



WELCOME TO OUR NEIGHBOURHOOD

NEIGHBOURHOOD POLICE CENTRE/POST

📍 Ayer Rajah Neighbourhood Police Post (e-Kiosk)

Address: 43 Teban Gardens Road, #01-388, S600043

📍 Boon Lay Neighbourhood Police Post (e-Kiosk)

Address: 210 Boon Lay Place, #01-00, S640210

📍 Nanyang Neighbourhood Police Centre

Address: 2 Jurong West Avenue 5, S649482
Tel: 1800 792 9999

📍 Telok Blangah Neighbourhood Police Post

Address: 51 Telok Blangah Drive, #01-116/118, S100055
Tel: 1800 272 9999

📍 Dover Neighbourhood Police Post

Address: 3 Dover Road, #01-368, S130003
Tel: 1800 778 8999

📍 Pasir Panjang Neighbourhood Police Post (e-Kiosk)

Address: 109A Pasir Panjang Road, S118815

📍 West Coast Neighbourhood Police Post (e-Kiosk)

Address: 728 Clementi West Street 2, #01-418, S120728

SINGAPORE POST OFFICE

📍 Clementi West Branch

Address: 727 Clementi West Street 2, #01-286, S120727

📍 Harbourfront Centre Branch

Address: 1 Maritime Square, #03-22, HarbourFront Centre, S099253

📍 Jurong Point Branch

Address: 1 Jurong West Central 2, #B1-45, Jurong Point Shopping Centre, S648886

📍 Pasir Panjang Branch

Address: 396 Pasir Panjang Road, #01-01, S118733

📍 Teban Gardens Branch

Address: 38 Teban Gardens Road, #01-316, S600038

TOWN COUNCIL OFFICE

📍 Clementi Office (Ayer Rajah-Gek Poh and West Coast Divisions)

Address: 441A Clementi Avenue 3, #02-01, S121441
Tel: 6776 0271

📍 Boon Lay Office (Boon Lay and Pioneer Divisions)

Address: 509 Jurong West Street 51, #01-159, S640509
Tel: 6896 4890

📍 Nanyang Office (Nanyang Division)

Address: 952 Jurong West Street 91, #01-725, S640952
Tel: 6791 5755

📍 Telok Blangah Office (Telok Blangah Division)

Address: 79/82 Telok Blangah Drive (Market & Food Centre)
Tel: 6377 5138

COMMUNITY LIBRARY

📍 Jurong West Public Library

Address: 60 Jurong West Central 3, #01-03, S648346

📍 library@harbourfront

Address: 1 Harbourfront Walk, #03-05 (Lobby F), VivoCity, S098585

POLYCLINIC

📍 Pioneer Polyclinic

Address: 26 Jurong West Street 61, S648201
Tel: 6908 2222



WELCOME TO THE NEIGHBOURHOOD!

We hope that you will enjoy our neighbourhood as much as we do. Remember this is just the beginning, there's so much more that awaits you in our friendly neighbourhood!

Our community is always here for you. Reach out to us, we are just a phone call or email away!

Stay abreast of community integration programmes:

www.facebook.com/pa.integration

ABOUT PEOPLE'S ASSOCIATION

The People's Association was established on 1 July 1960 to promote racial harmony and social cohesion in Singapore. Our mission is to build and bridge communities in achieving one people, one Singapore.

The People's Association offers a wide range of programmes and volunteering opportunities for Singaporeans from all walks of life through a network of over 2,000 Grassroots Organisations, over 100 Community Clubs, five Community Development Councils, National Community Leadership Institute and PASSion Wave.



More information at www.pa.gov.sg

or scan the QR code below:



IMPORTANT INFORMATION

EMERGENCY CONTACTS

Emergency Ambulance and Fire
995

Non-Emergency Ambulance
1777

Police Emergency
999

Police Emergency SMS
(if not possible to call)
71999

Police Hotline (for crime-related information)
1800 255 0000

Fire Hazard Reporting (SCDF)
1800 280 0000

USEFUL CONTACTS

Essential Maintenance Service Unit (for common estate areas)
1800 275 5555

Building & Construction Authority (to report structural defects in condominiums and non-public housing buildings)
1800 342 5222

General Utilities
1800 778 8888 (SP)
1800 225 5782 (PUB)
1800 752 1800 (City Energy)

Community Mediation Centre (for neighbour disputes)
1800 225 5529

National Environment Agency
6225 5632

Public Utilities Board (to report floods/ drain obstructions)
1800 225 5782

Land Transport Authority (for roads, crossings, bus services/stops)
1800 225 5582

National Parks Board
1800 471 7300

Animal & Veterinary Service
1800 476 1600

COMMUNITY CLUBS

AYER RAJAH-GEK POH

Ayer Rajah Community Club
Address: 150 Pandan Gardens, S609335
Tel: 6560 9983



Facebook

Gek Poh Ville Community Club
Address: 1 Jurong West Street 74, S649149
Tel: 6792 0095



Facebook

BOON LAY

Boon Lay Community Club
Address: 10 Boon Lay Place, S649882
Tel: 6261 9947



Facebook

NANYANG

Nanyang Community Club
Address: 60 Jurong West Street 91, S649040
Tel: 6791 0395



Facebook

PIONEER

The Frontier Community Club
Address: 60 Jurong West Central 3, #01-01, S648346
Tel: 6795 8229



Facebook

TELOK BLANGAH

Dover Community Centre
Address: 1 Dover Road, #01-300, S130001
Tel: 6777 1540



Facebook

Telok Blangah Community Club
Address: 450 Telok Blangah Street 31, S108943
Tel: 6271 9602

WEST COAST

West Coast Community Centre
Address: 2 Clementi West Street 2, S129605
Tel: 6779 1098



Facebook

